

TOWN CONSERVATION AND RECREATION AREAS

Parks and Recreation

- A Judd Park
- B The Ledges Golf Course
- C Bicentennial Canal Park
- D Buttery Brook Park
- E Beachgrounds Park

Conservation Areas

- 1 * Bachelor Brook-Stony Brook Conservation Area
- 2 * Bynan Conservation Area
- 3 * Bagg-Pierce Wildlife Sanctuary Conservation Area
- 4 * Warner Conservation Area
- 5 Titus Pond Conservation Area
- 6 Carver Conservation Area
- 7 Jones Conservation Area
- 8 Newton Conservation Area
- 9 LeBlanc Conservation Area
- 10 * Mount Holyoke Range Conservation Areas
- 11 Trompke/Stony Brook Conservation Area
- 12 Hawkins Bird Sanctuary
- 13 Gormally Conservation Area
- 14 Popp Conservation Area (adjacent to Bagg-Pierce)
- 15 * Black Stevens Conservation Area
- 16 Bachelor Brook (East)
- 17 Laurie Avenue

* These areas have at least one trail

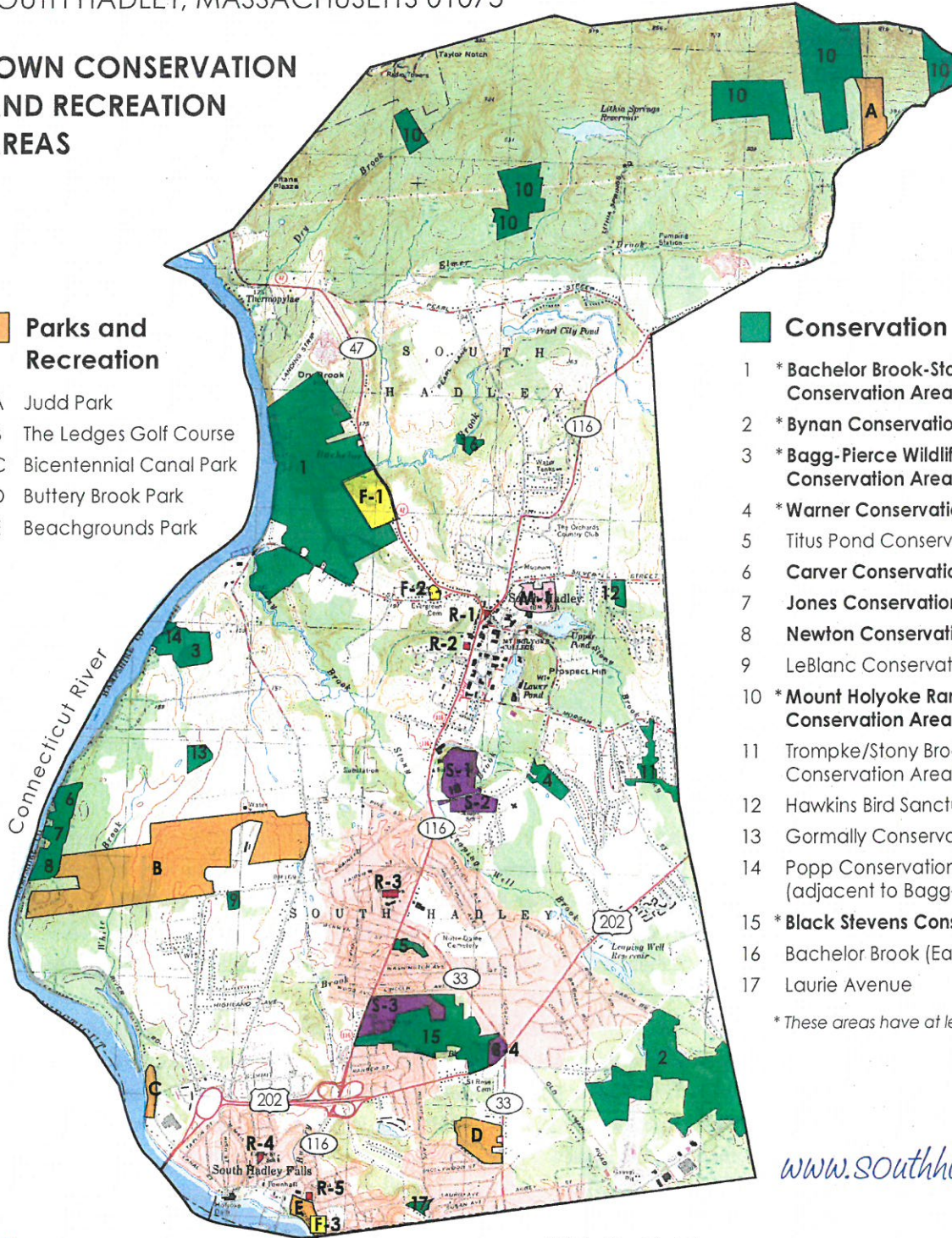
Other Resources

- R-1 Town Common
- R-2 Gaylord Memorial Library
- R-3 Senior Center
- R-4 South Hadley Public Library
- R-5 Town Hall

Athletic Fields

- F-1 Town Farm Athletic Fields
- F-2 Center School/Ferry Street Field
- F-3 Beachgrounds Park
- S-1* Town School Athletic Facility: Smith Middle School
- S-2* Town School Athletic Facility: Mosier Elementary School
- S-3 Town School Athletic Facility: South Hadley High School
- S-4* Town School Athletic Facility: Plains Elementary School
- M-1 Mount Holyoke College Athletic Fields

* These schools also have playgrounds



www.southhadley.org