

ELECTION 2020

★ YOUR VOTE ★ YOUR CHOICE ★ YOUR WAY ★

SOUTH HADLEY'S VOTER OPTIONS GUIDE SEPTEMBER 1, 2020 PRIMARY ELECTION

On July 6th the Governor signed new legislation - An Act relative to voting options in response to COVID. This legislation outlines 3 options for voting in the fall 2020 elections: Vote by Mail, Vote Early In-Person or Vote In-Person on Election Day.

ELECTION TYPE	DATE OF ELECTION	ELECTION DAY LOCATION	ELECTION DAY HOURS	DEADLINE TO <u>REGISTER</u> <u>TO VOTE</u>	VOTE BY MAIL <u>APPLICATION</u> <u>DEADLINE</u>
State Primary Election	September 1, 2020	SHHS	7 AM - 8 PM	August 22, 2020	August 26th - 5PM
Presidential Election	November 3, 2020	SHHS	7 AM - 8 PM	October 24, 2020	October 28th - 5PM

SELECTION OF BALLOT TYPES - PRIMARY ELECTION ONLY

In a primary election, a voter who is NOT registered in a political party (Unenrolled or commonly known as Independent) must specify the party ballot type of choice on the application to vote by mail or in person voting (early or on election day). We are unable to process applications for Unenrolled voters who do not select a party ballot type on their application. Unenrolled voters who select a party ballot type do not become registered in that party - they remain Unenrolled voters. Voters who are registered in one of the 4 political parties (Democrat, Republican, Green-Rainbow, Libertarian) MUST take that party ballot and are not given a choice of ballot type - [verify your party enrollment](#) or [change your party enrollment](#) prior to the deadline to register to vote and before applying for a mail in ballot.

View sample ballots when available at: <https://www.southhadley.org/156/Clerk>

Voting by Mail

All registered voters qualify to vote by mail in the fall 2020 elections. Application post cards will be mailed to ALL registered voters, at their mailing address, who have not already applied to receive a vote by mail ballot as follows:

September 1, 2020 Primary Election

Approximate date of post card application mailing: July 15th

Mailed to all voters registered by & voters without an application already processed by July 1st

APPLY EARLY - to allow ample time for processing your application and for the postal services to deliver your ballot to you. Voters who receive a vote by mail ballot but do not return it prior to election day may appear to vote in person on election day to cast a ballot. Any voter that has returned a vote by mail ballot (or voted early in person) cannot vote on Election Day.

Applications can be returned by Mail (postage is pre-paid on the post card application mailed to you) or placed in the drop box outside of the town offices (116 Main St).

The following is an example of what the vote-by-mail application that was mailed looks like:



The image shows a sample of a "Official 2020 Vote by Mail Application" form. At the top center is the Seal of the Commonwealth of Massachusetts. Below the seal, the title "Official 2020 Vote by Mail Application" is printed in large, bold, black font. Underneath the title is a smaller seal on the left and the text "I WANT TO VOTE! Massachusetts Official Vote by Mail Application" on the right. The form is divided into two main sections. The left section is titled "Voter Information:" and contains the following text: "JOHN Q VOTER", "1 MAIN STREET", "Party: NO PARTY", and "Year of Birth: 1950". Below this text is a barcode and the number "0-1". The right section is titled "Mail ballot to (if different):" and has two horizontal lines for an address. Below that is a "Phone Number:" field with a horizontal line for input.

Click here to → [TRACK YOUR APPLICATION AND BALLOT](#)

Voters who have applied for a vote by mail ballot may use this link to track the status of their application as well as their ballot status (mailed / received back). Please note that we anticipate a large volume of applications (there are over 11,000 voters in South Hadley) and request you **allow at least 2 weeks before checking the status of your application and allow a minimum of 14 days to receive your ballot from the status date of mailing.** Please DO NOT contact the Clerk's Office to check on your status until the recommended amount of time listed above has passed.

RETURN OF VOTE BY MAIL BALLOTS

Mailed Ballots include a postage pre-paid return ballot envelope that is addressed to the Town Clerk's Office. You may return your ballot by mail (please see deadlines below) or hand deliver your ballot by placing it in the drop box outside of the Town Offices (deadline is the close of polls on Election Day). Ballots can NOT be returned to the polling location on Election Day - they must be returned to the Town Clerk's Office for processing before they are delivered by Town Clerk's staff to the polls to be cast on Election Day. Voters who receive a vote by mail ballot but do not return it prior to Election Day may appear to vote in person and cast a ballot on Election Day. Any voter that has returned a vote by mail ballot (or voted early in person) is not permitted to appear to vote in person on Election Day.

Deadlines for ballots to be returned and counted

- **Primary Election** - All ballots must be received at Town Hall by **8PM** on **September 1st**

Please note that US Postal delivery services are not consistent and can range from 3 to 14 days. We recommend voters return their ballots in the drop box outside of the town offices by 8PM on Election Day or mail ballots back to ensure it arrives back to us in time to count.

Vote Early In-Person

Early Voting in person will be available for the fall 2020 elections.

An application is not required to vote early in person...just show up and vote!

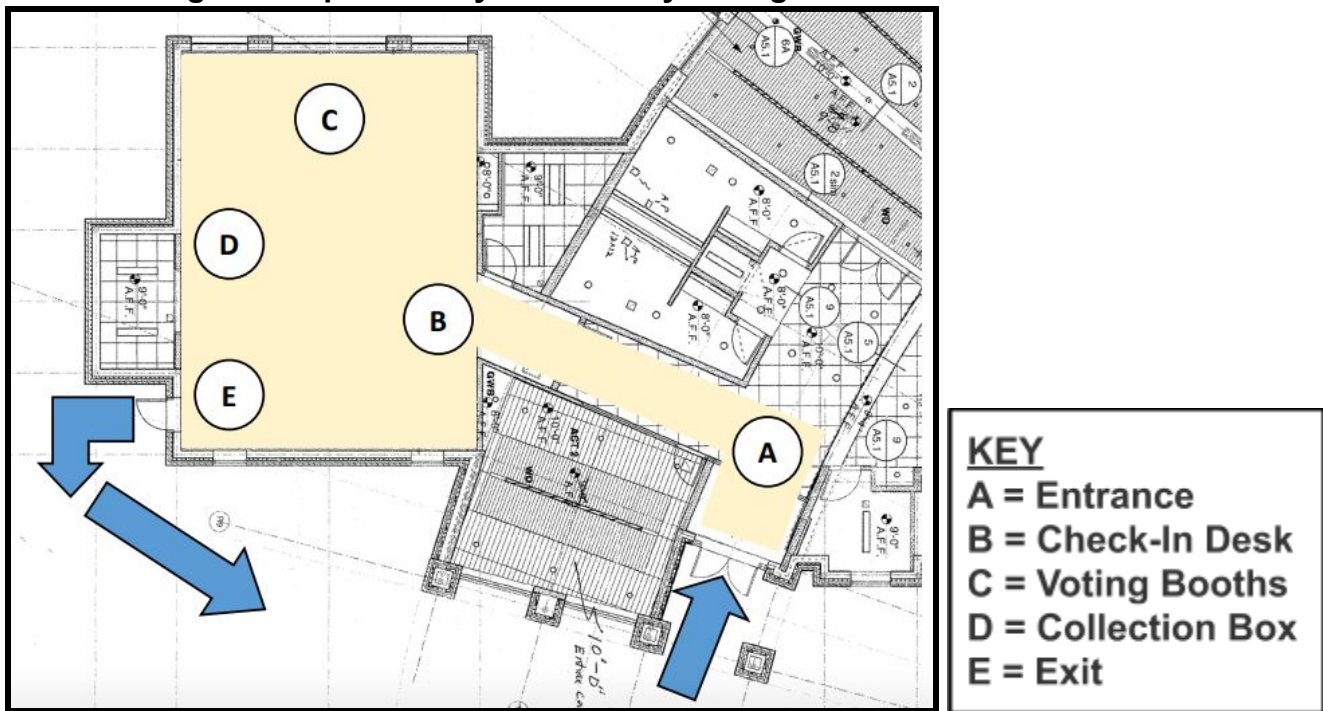
State Primary Election Early Voting in Person

Period: August 22nd - 28th

Location: South Hadley Public Library – 2 Canal Street – Community Room

Day	Date	Hours
Saturday	8/22	9:00 AM - 1:00 PM
Monday	8/24	10:00 AM - 2:00 PM
Tuesday	8/25	10:00 AM - 2:00 PM
Wednesday	8/26	10:00 AM - 2:00 PM
Thursday	8/27	3:00 PM - 7:00 PM
Friday	8/28	10:00 AM - 2:00 PM

The following is a map of the layout for Early Voting:



Voting on Election Day

All Elections are held in the South Hadley High School Gym - 157 Newton St, South Hadley, MA 01075

What's my Precinct? <https://www.southhadley.org/159/2010-Precinct-Boundaries>

- **Wear a Face Covering**
- **Bring a Pen** – Blue or Black ink sharpie or Paper Mate Flair (if you don't want to borrow one)
- **Bring a Clipboard or Book** to mark your ballot on (if you don't want to use a Voting Booth)
- **Bring an ID** – in some cases voters will be required to show an ID.
- **Don't touch your face** while at the polling location
- **Maintain Social Distancing** – keep 6' away from anyone not from your household
- **Keep your ballot dry and free from hand sanitizers** – to avoid tabulator issues

KNOW BEFORE YOU GO TO VOTE

Educated voters will reduce the amount of time necessary in the voting booths and reduce lines and crowding while voting.

Unenrolled / Independent voters will need to choose which primary ballot type they want to vote on). Voters who are registered in a particular party (Democrat, Republican, Green-Rainbow, Libertarian) MUST take that party ballot type - [verify your party enrollment](#) or [change your party enrollment](#).

View sample ballots when available at <https://www.southhadley.org/156/Clerk>

What to Bring or Know when voting early in person:

- **Wear a Face Covering**
- **Bring a Pen** – Blue or Black ink sharpie or Paper Mate Flair (if you don't want to borrow one)
- **Bring a Clipboard or Book** to mark your ballot on (if you don't want to use a Voting Booth)
- **Bring an ID** – in some cases voters will be required to show an ID.
- **Don't touch your face** while at the polling location
- **Maintain Social Distancing** – keep 6' away from anyone [not from your household](#)

EARLY VOTING (by mail or in person) FAQ:

If I applied for a vote by mail ballot can I appear to vote in person at an early voting site or at the polls on Election Day?

If your vote by mail ballot has not been received back to the Town Clerk's Office – **YES**, you may still appear to vote in person at the polls on Election Day. These voters will be required to complete additional paperwork and will need to show an ID. Should your mail-in ballot be received after you voted early in person or at the polls on Election Day, that ballot will be rejected and will not be counted.

If a vote by mail ballot has already been received back by the Town Clerk's Office – **NO**. A returned vote by mail ballot is considered cast and you will not be eligible to vote by mail, early in person or in person at the polls on Election Day.

If I vote early in person can I appear to vote in person at the polls on Election Day?

NO - If you appeared to vote early in person your ballot will be considered cast and you will not be eligible to vote by mail, or in person at the polls on Election Day. Voting in Person at the Polls after submitting an early ballot is prohibited as outlined in 950 CMR 4 7.19.

Electioneering During Early Voting in Person

The Select Board adopted the following regulation for the period designated for in-person absentee voting and the State's Early Voting Period:

No poster, card, handbill, placard, picture or circular intended to influence the action of the voter, other than those expressly authorized by G.L. c. 54, § 65, shall be posted, exhibited, circulated or distributed in the Early Voting Facilities, in the building where the Early Voting is taking place, on the walls thereof, on the premises on which the Early Voting Facilities stand within one hundred and fifty feet (150') of the building entrance door to the Early Voting Facilities.