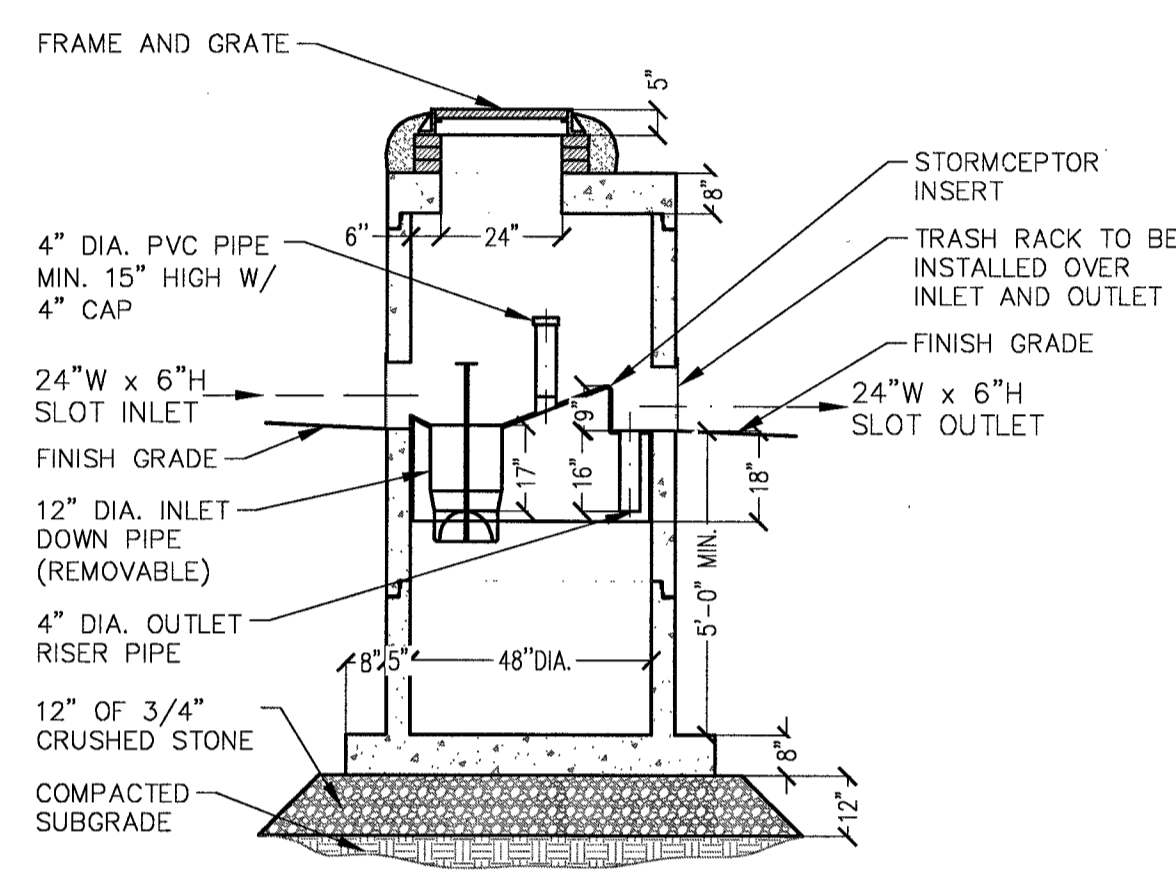
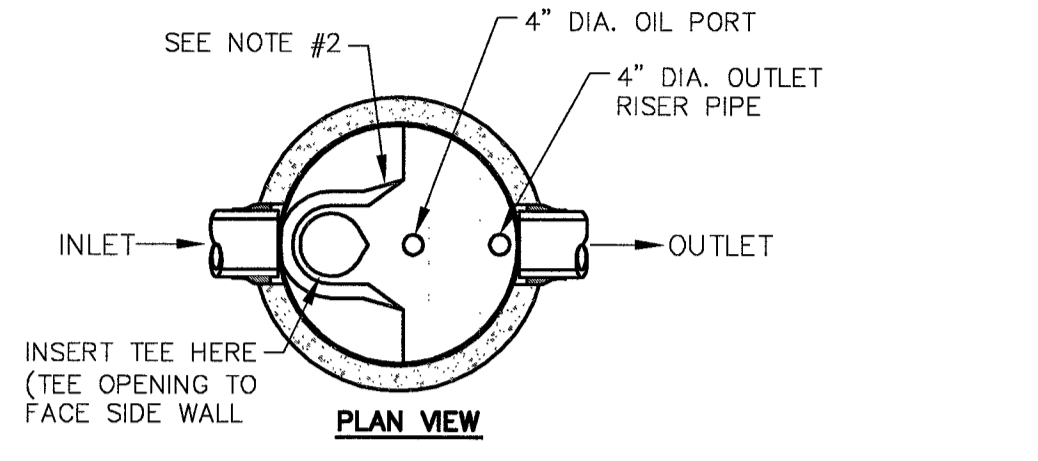


**NOTES:**

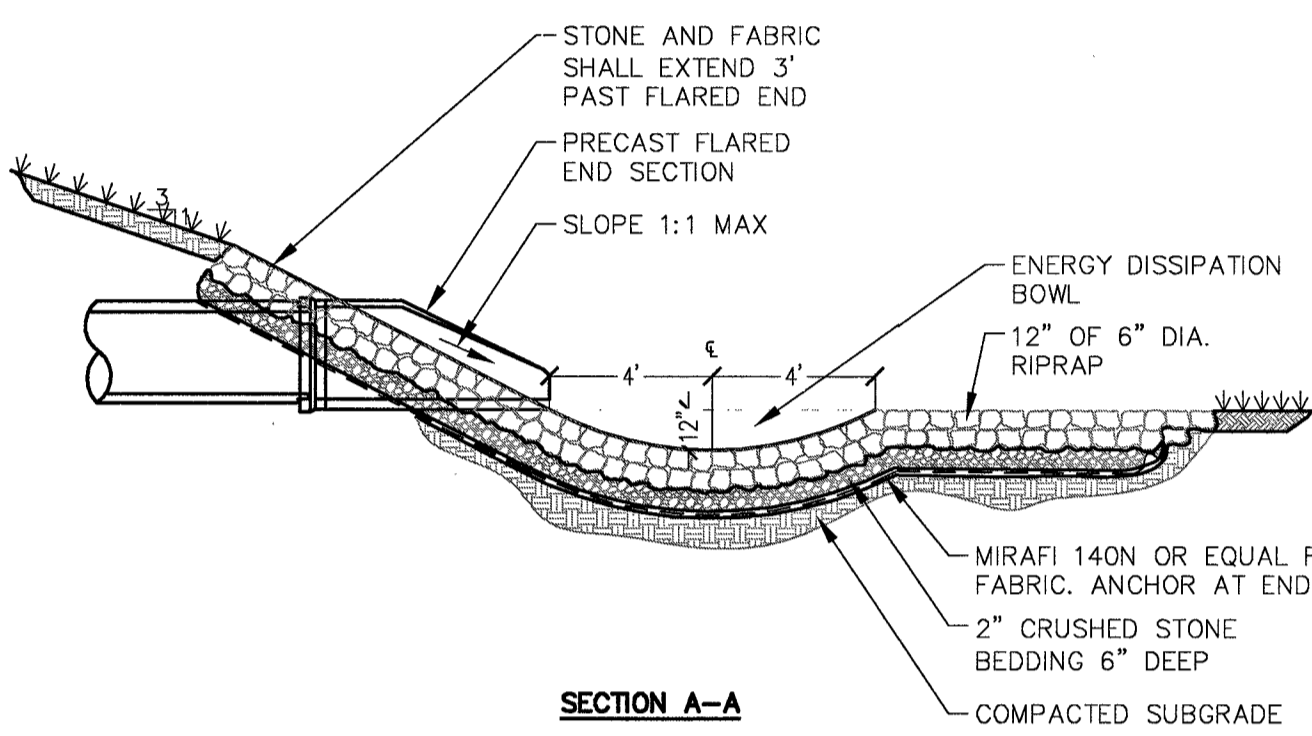
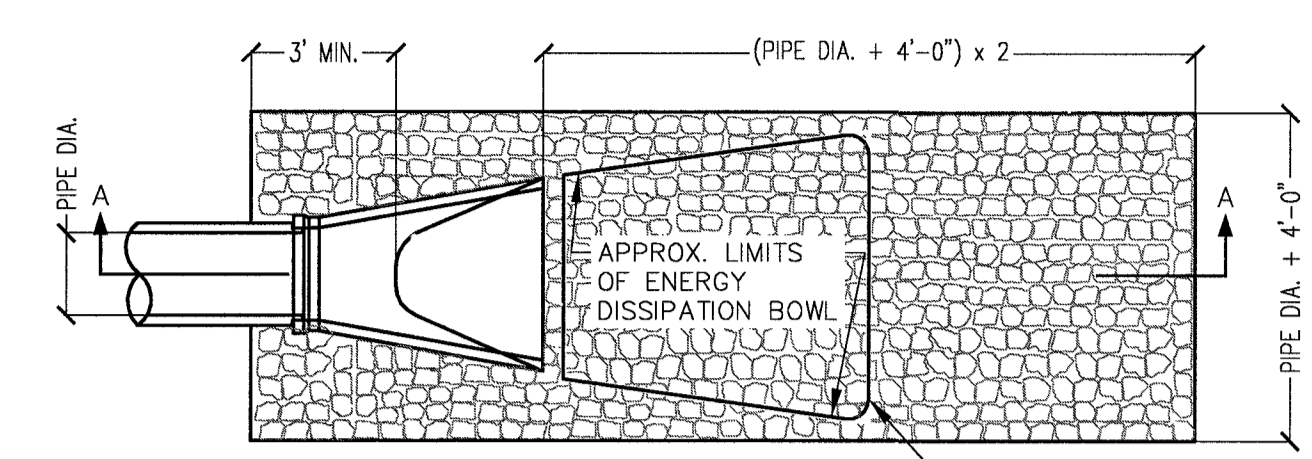
- 1. THE USE OF FLEXIBLE CONNECTION IS RECOMMENDED AT THE INLET AND OUTLET WHERE APPLICABLE.
- 2. THE COVER SHOULD BE POSITIONED OVER THE INLET DROP PIPE AND THE OIL PORT.
- 3. ALL SECTIONS SHALL BE DESIGNED FOR HS-20 LOADING.
- 4. PROVIDE "V" KNOCKOUTS FOR PIPES WITH 2" MAX. CLEARANCE TO OUTSIDE OF PIPE. MORTAR ALL PIPE CONNECTIONS.
- 5. JOINT SEALANT BETWEEN PRECAST SECTIONS SHALL BE PREFORMED BUTYL RUBBER.
- 6. CATCH BASIN FRAME AND GRATE SHALL BE SET IN FULL MORTAR BED. ADJUST TO GRADE WITH SLAY BRICK AND MORTAR (2 BRICK COURSES TYPICALLY, 5 BRICK COURSES MAX.)
- 7. WATER QUALITY FLOW FOR WQU-1=0.26 CFS AND FOR WQU-2=0.39 CFS.



**STORMCEPTOR 450 GALLON INLET (STCI)**  
SCALE: N.T.S.

**NOTES:**

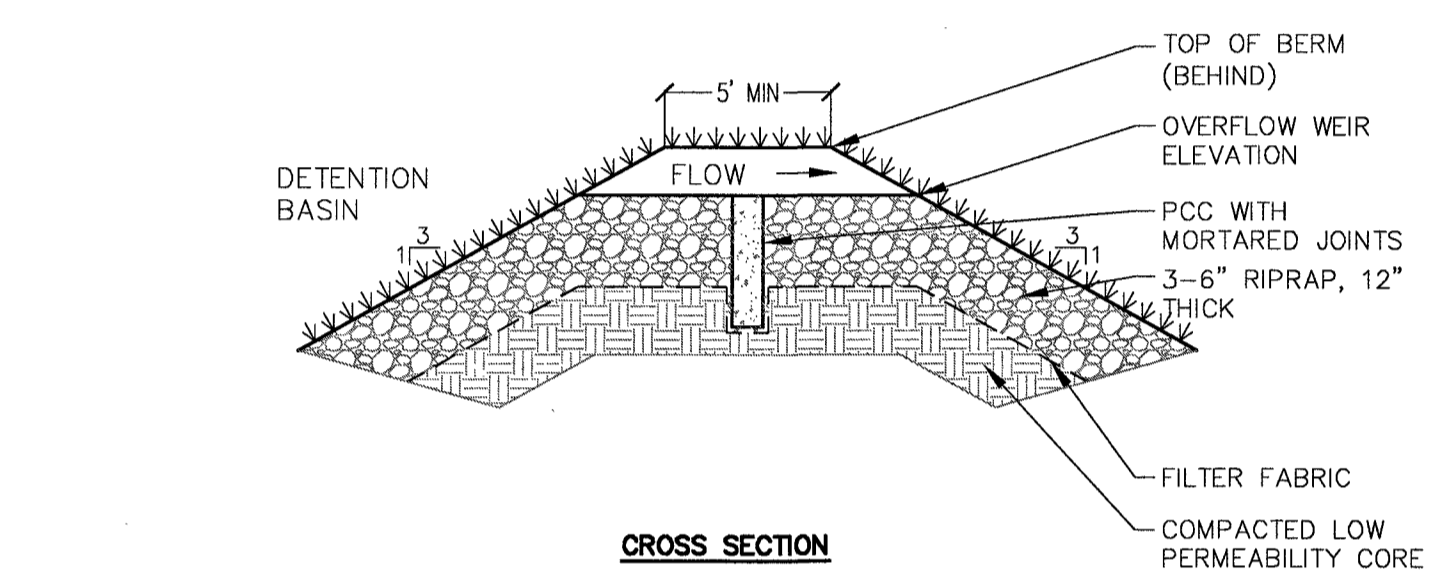
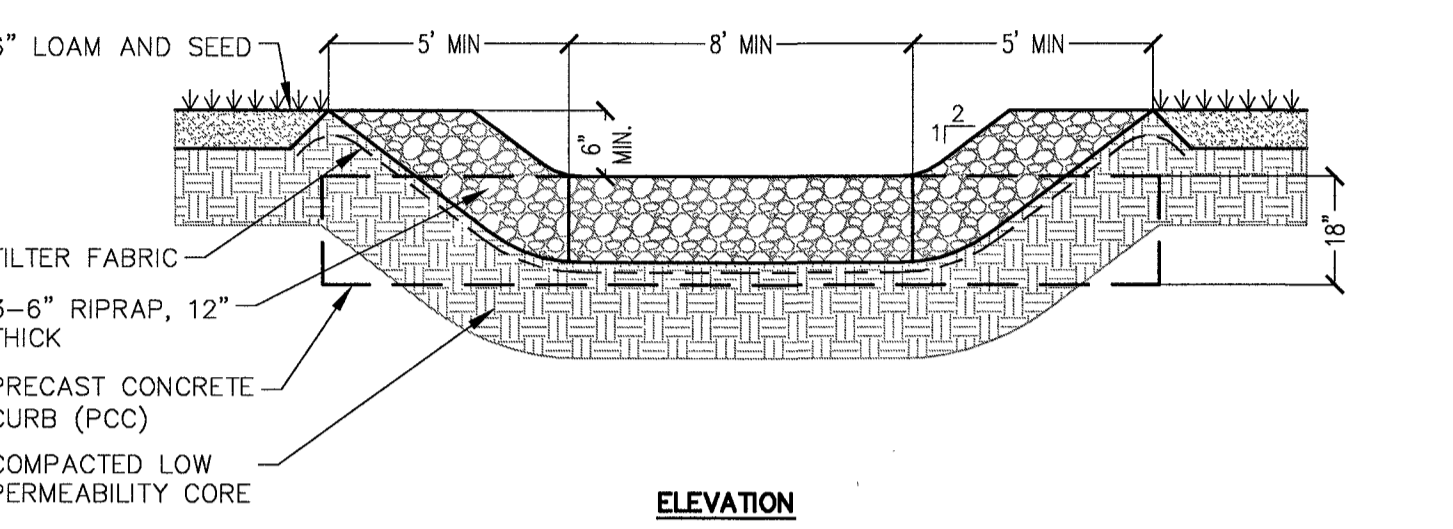
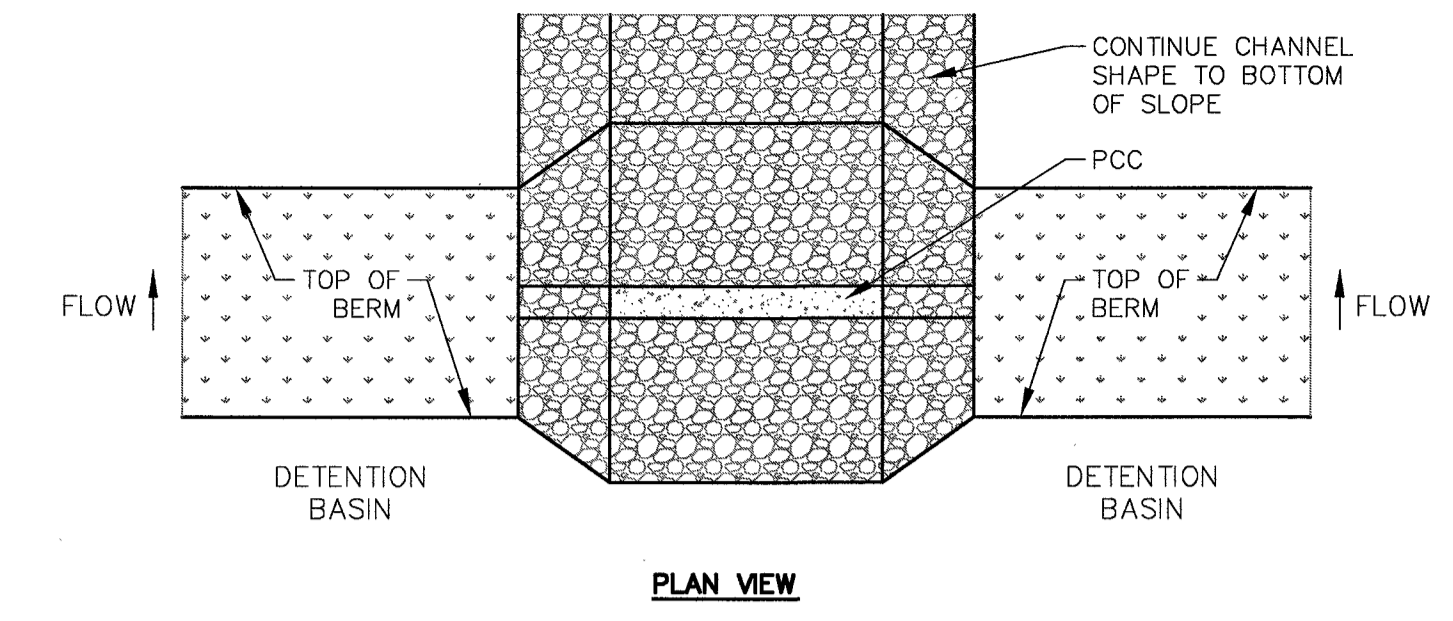
- 1. FILTER FABRIC, RIP-RAP & CRUSHED STONE TO EXTEND MIN. OF 12" BEYOND PIPE OPENING.



**FLARED END SECTION (FES)**  
SCALE: N.T.S.

**NOTES:**

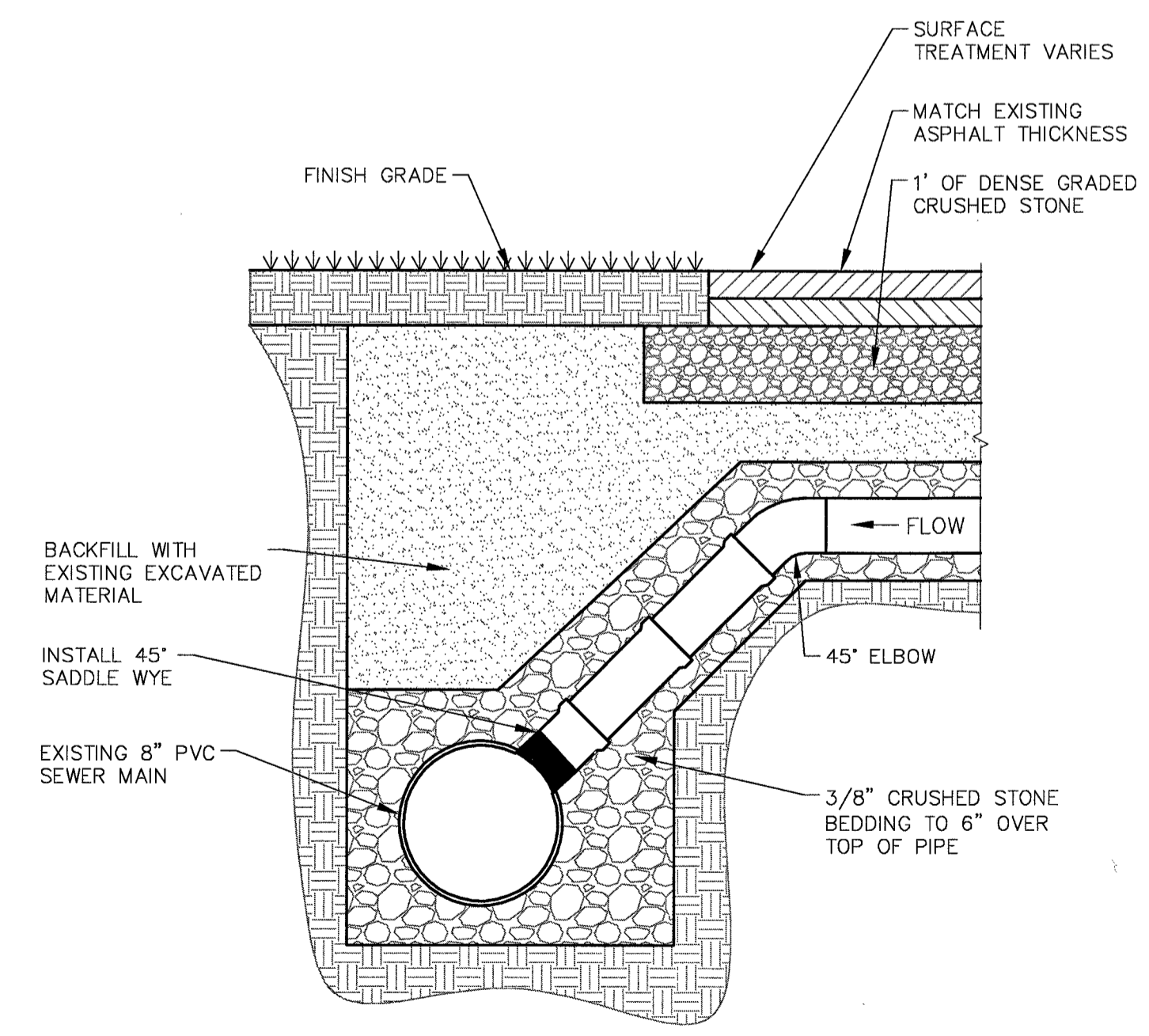
- 1. PIPES PENETRATING THE LOW PERMEABILITY CORE SHALL BE BEDDED IN THE LOW PERMEABILITY CORE MATERIAL.
- 2. THE BERM SECTION IS SUBJECT TO CHANGE AND WILL BE BASED ON THE RESULTS OF FURTHER GEOTECHNICAL INVESTIGATIONS.



**BASIN BERM OVERFLOW WEIR**  
SCALE: N.T.S.

**NOTES:**

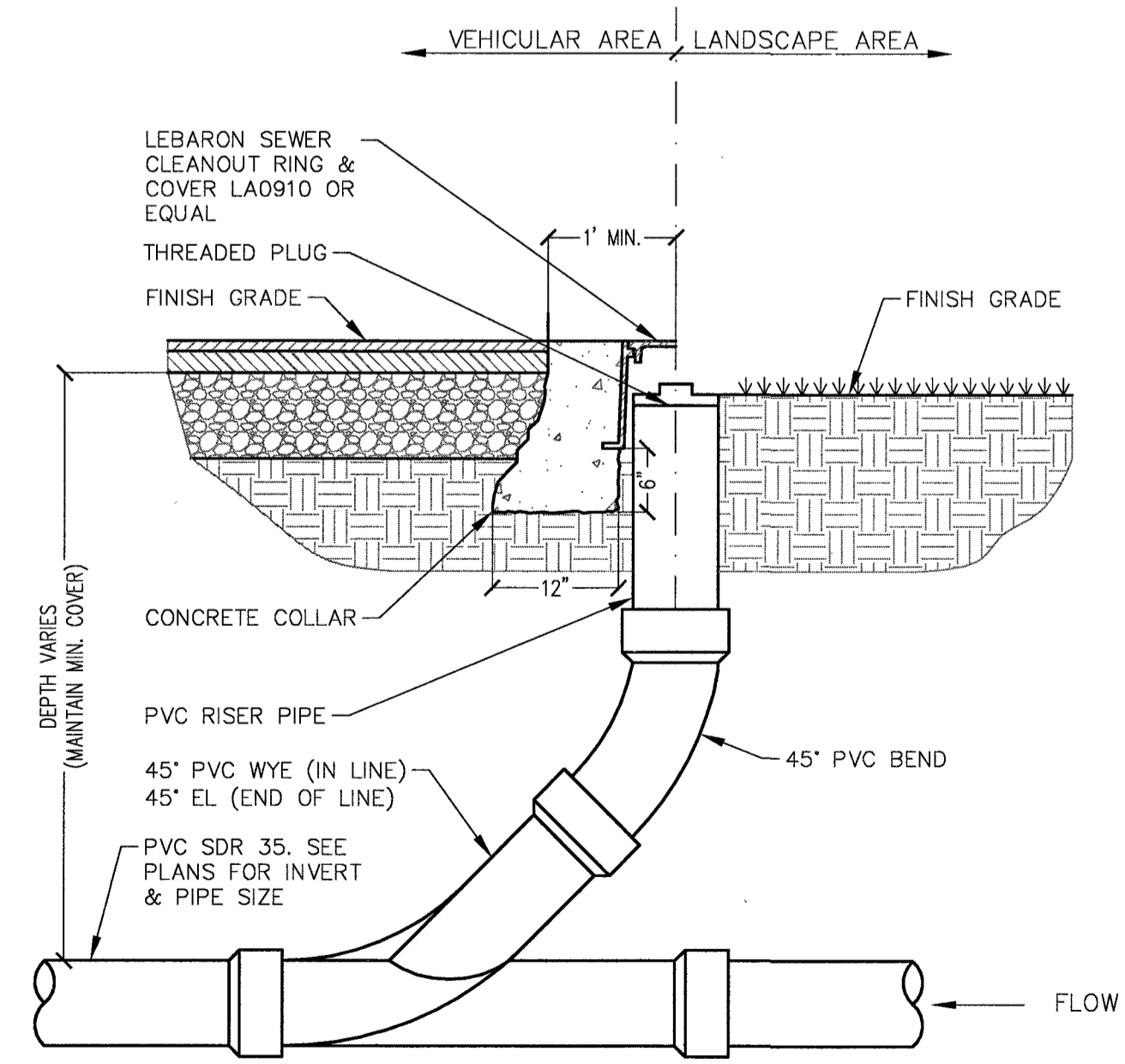
- 1. ALL SEWER PIPE SHALL HAVE A MINIMUM DEPTH OF 4' FROM TOP OF PIPE TO FINISH GRADE. IF 4' OF COVER IS NOT POSSIBLE PIPE SHALL BE INSULATED.
- 2. ALL SERVICE PIPING SHALL BE 6" DIAMETER PVC SDR 35.
- 3. COMPACT ALL FILL IN 1' MAXIMUM LOOSE LIFT THICKNESS



**SANITARY SEWER WYE CONNECTION**  
SCALE: N.T.S.

**NOTES:**

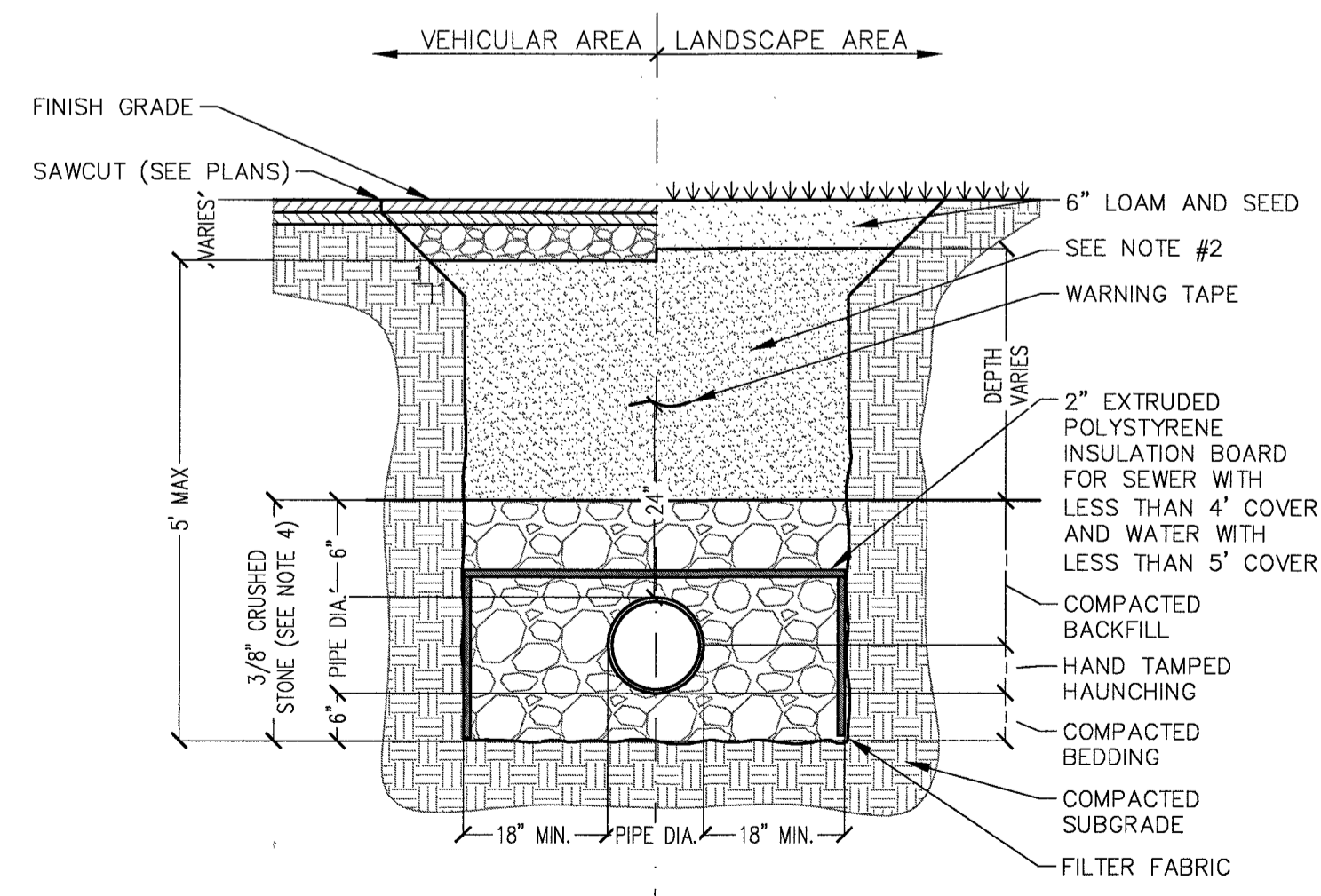
- 1. WHERE UTILITY TRENCHES ARE CONSTRUCTED THROUGH DETENTION BASIN BERMS OR OTHER SUCH SPECIAL SECTIONS, PLACE TRENCH BACKFILL WITH MATERIALS SIMILAR TO THE SPECIAL SECTION REQUIREMENTS.
- 2. USE FLOWABLE FILL IN TRENCHES IN THE CITY R.O.W. AND CONTROLLED FILL ON PRIVATE PROPERTY APPLICATIONS
- 3. ALL ELECTRIC LINES TO BE CONCRETE ENCASED. TOP OF CONCRETE ENCASEMENT CAN BE NO HIGHER THAN 30" BELOW FINISHED GRADE.
- 4. GAS, ELECTRIC, TEL/DATA SERVICES SHALL HAVE SAND BEDDING IN LIEU OF 3/8" CRUSHED STONE.



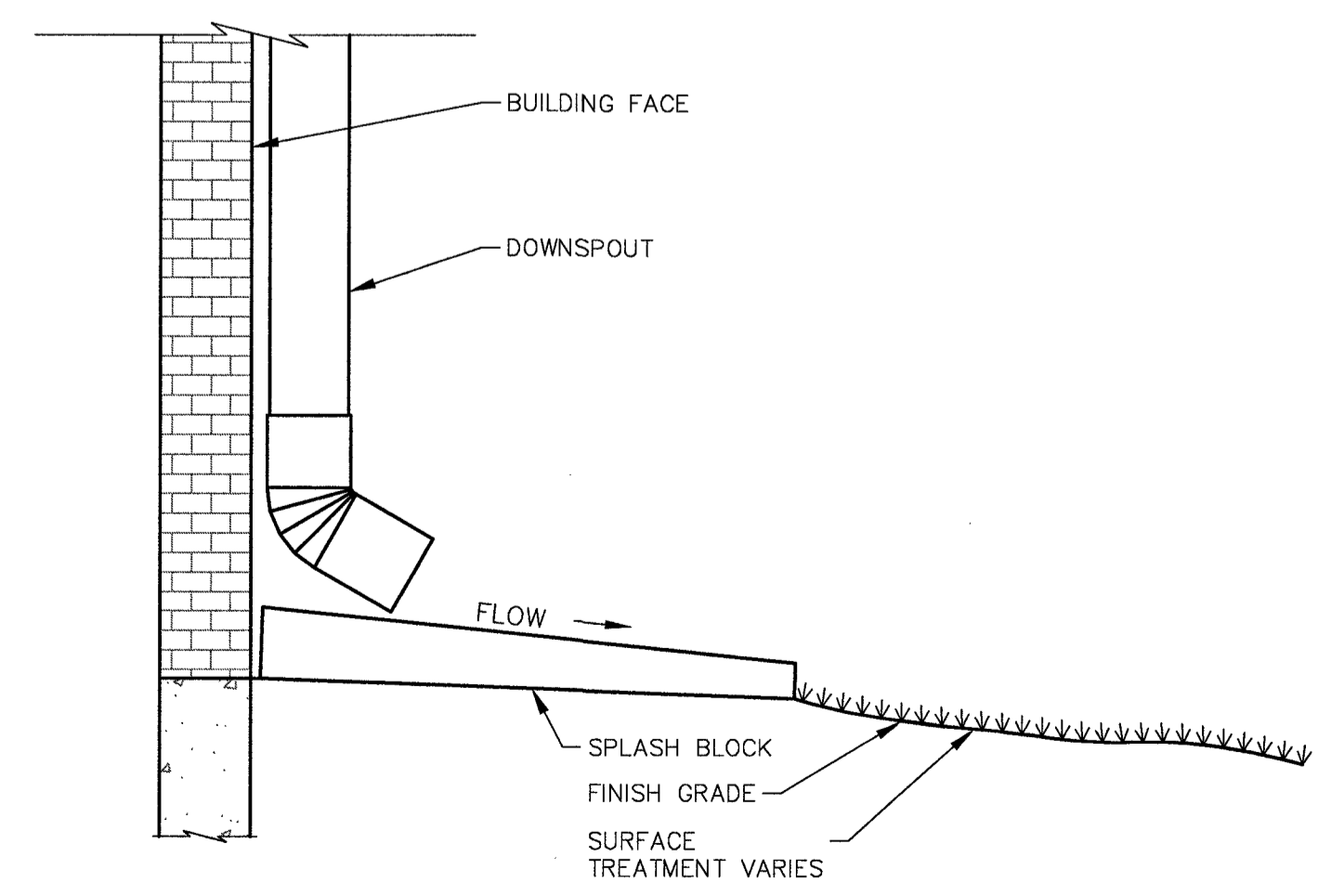
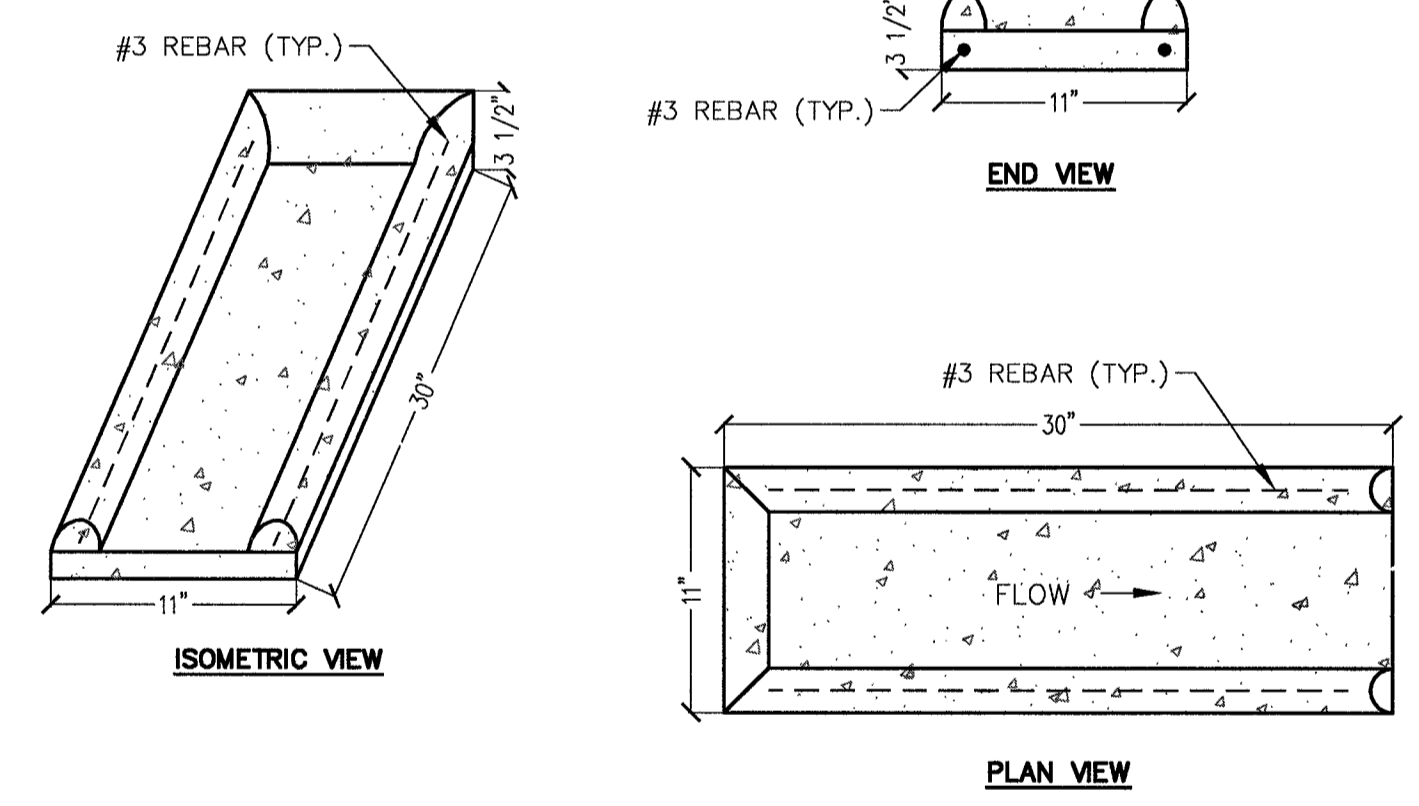
**SEWER CLEANOUT**  
SCALE: N.T.S.

**NOTES:**

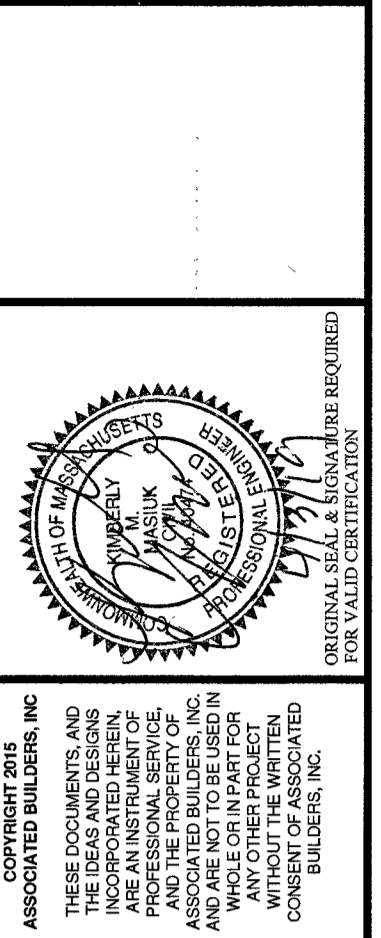
- 1. WHERE UTILITY TRENCHES ARE CONSTRUCTED THROUGH DETENTION BASIN BERMS OR OTHER SUCH SPECIAL SECTIONS, PLACE TRENCH BACKFILL WITH MATERIALS SIMILAR TO THE SPECIAL SECTION REQUIREMENTS.
- 2. USE FLOWABLE FILL IN TRENCHES IN THE CITY R.O.W. AND CONTROLLED FILL ON PRIVATE PROPERTY APPLICATIONS
- 3. ALL ELECTRIC LINES TO BE CONCRETE ENCASED. TOP OF CONCRETE ENCASEMENT CAN BE NO HIGHER THAN 30" BELOW FINISHED GRADE.
- 4. GAS, ELECTRIC, TEL/DATA SERVICES SHALL HAVE SAND BEDDING IN LIEU OF 3/8" CRUSHED STONE.



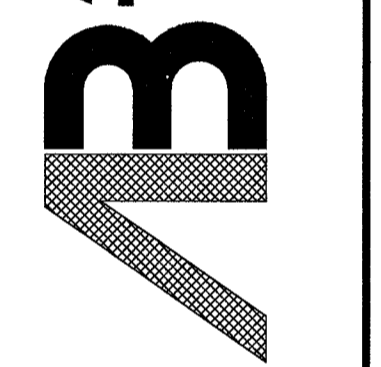
**UTILITY TRENCH**  
SCALE: N.T.S.



**DOWNSPOUT SPLASH BLOCK**  
SCALE: N.T.S.



ASSOCIATED BUILDERS, INC.  
4 INDUSTRIAL DRIVE, SOUTH HADLEY, MA 01075  
PHONE (413) 536-0021 FAX (413) 536-0908  
EMAIL: abuilders@abuilders.com



**Proposed Facility**  
**Center for Human Development**  
51 Old Lyman Road  
South Hadley, MA 01075

DATE	DESCRIPTION
01/25/19	ISSUED FOR BID
02/01/19	ISSUED FOR LOCAL APPROVALS
02/15/19	ISSUED FOR CONSTRUCTION PROPOSAL
03/15/19	REVISED FOR TOWN COMMENTS
04/03/19	REVISED FOR TOWN COMMENTS (2)

PLAN DATE: N.T.S.  
JOB #: 18008  
SHEET #: L5.1