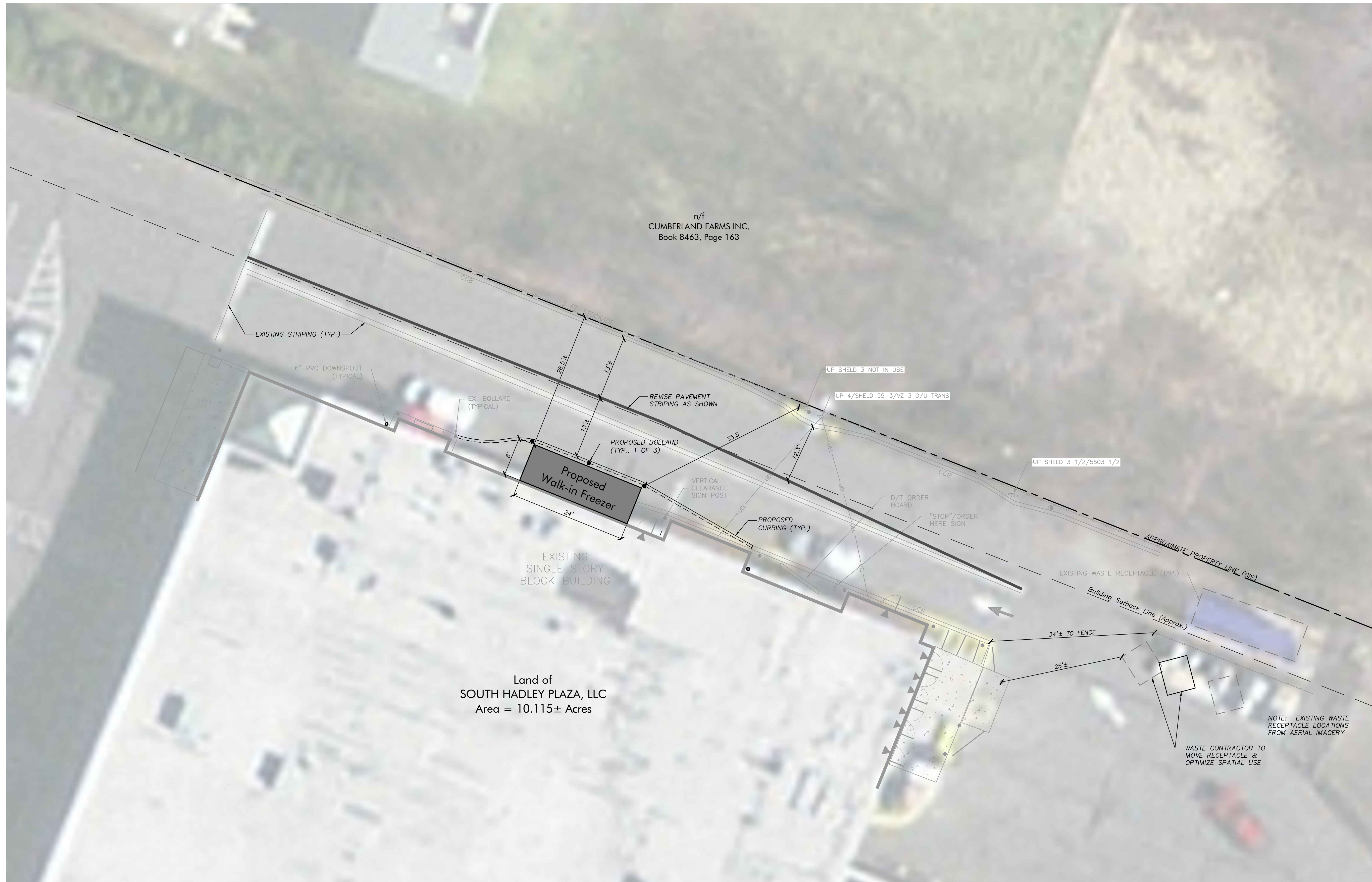


NOTES:

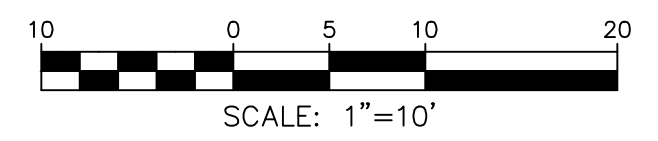
1. THIS PLAN HAS BEEN PRODUCED FOR COORDINATION PURPOSES ONLY WITH THE TOWN OF SOUTH HADLEY AND SHALL NOT BE USED FOR CONSTRUCTION OR THE CONVEYANCE OF LAND.
2. THE EXISTING CONDITIONS DEPICTED HEREON ARE BASED ON A PARTIAL TOPOGRAPHIC SURVEY PERFORMED BY R LEVESQUE ASSOCIATES, INC. IN OCTOBER 2018. AERIAL IMAGERY AND BOUNDARY-RELATED MATTERS ARE REFERENCED FROM MASSGIS DATABASES.
3. THE PREMISES SHOWN HEREON ARE A PORTION OF THE SAME AS CONVEYED TO SOUTH HADLEY PLAZA, LLC BY THE DEED RECORDED AT THE HAMPSHIRE COUNTY REGISTRY OF DEEDS IN BOOK 12265, PAGE 36.



NOTE: EXISTING WASTE RECEPTACLE LOCATIONS FROM AERIAL IMAGERY

WASTE CONTRACTOR TO MOVE RECEPTACLE & OPTIMIZE SPATIAL USE

S:\Projects\2018\181016 - Martins - Newton St. South Hadley\Civil 3D\181016 - SITE CONCEPT.dwg



RLA
R LEVESQUE ASSOCIATES INC.
 Landscape Architects
 Civil Engineers · Land Surveyors
 Environmental Consultants
 ph: 413.568.0985 fax: 413.568.0986
 40 School Street
 Westfield, MA 01085
 rland.com

SITE PLAN
PROPOSED WALK-IN FREEZER
 497 Newton Street
 South Hadley, MA 01075

PREPARED FOR:
 Mr. Peter Martins
 350 Cottage Street
 Springfield, MA 01104

ISSUANCE DATE: November 2, 2018

REVISIONS:	DATE:

DRAFTED BY:
 UNAUTHORIZED ALTERATION OF THIS DOCUMENT IS A VIOLATION OF MASSACHUSETTS STATE LAW

SCALE: AS NOTED
 RLA PROJ. NUMBER: 181016

DRAWING#	REV.
C-1	

PLANNING REVIEW