

**RIVERCREST CONDOMINIUM, LLC**  
129 College Street  
South Hadley, MA 01075

September 14, 2017

Town of South Hadley  
Richard Harris, Town Planner  
Planning Board  
116 Main Street  
South Hadley, MA 01075

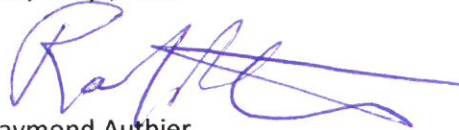
**RE: Rivercrest Application to Amend  
Special Permit**

Dear Mr. Harris:

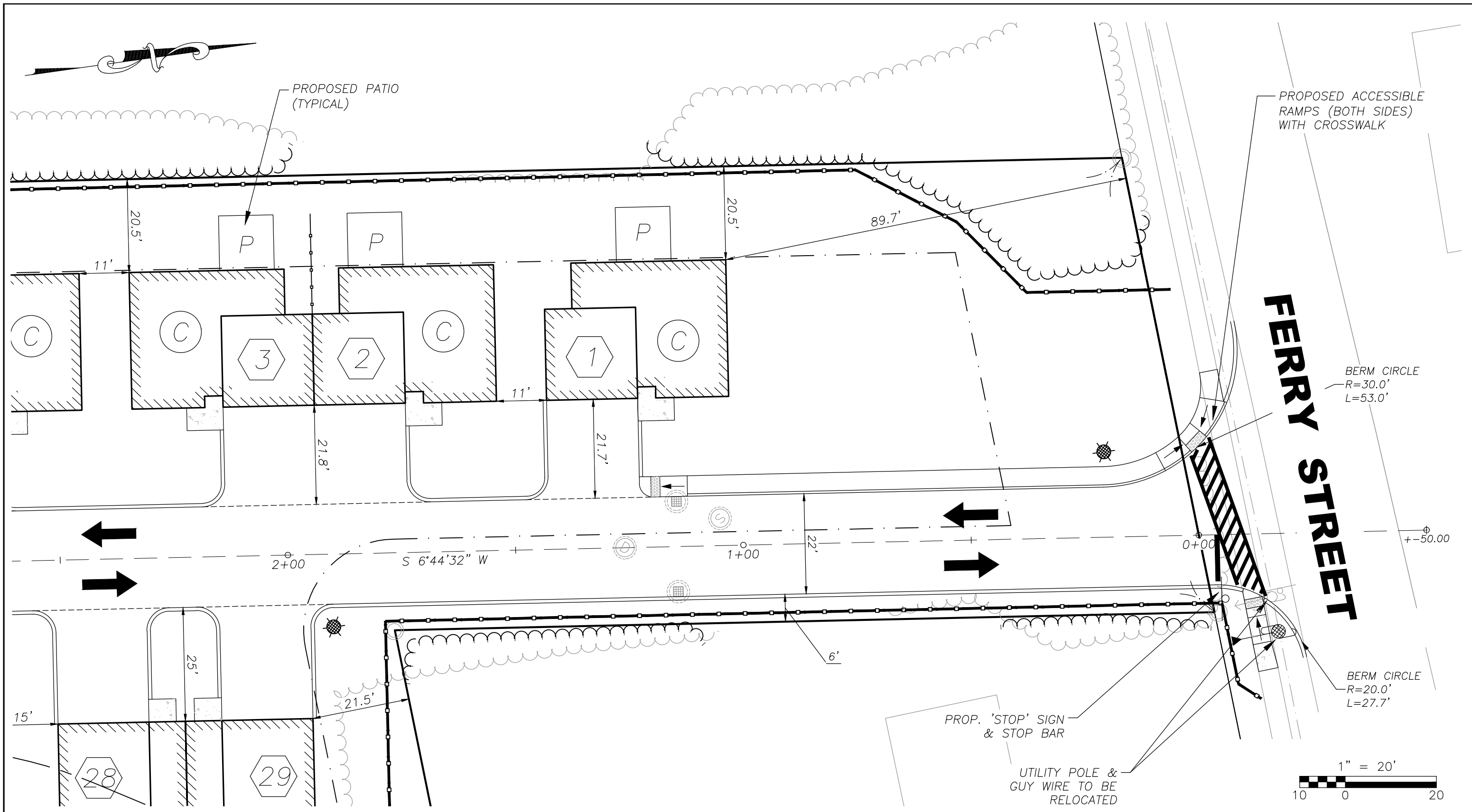
Enclosed please find our check in the amount of \$50.00 to cover the cost for the application fee together with 2 plan sheets prepared by R. Levesque Associates showing the proposed changes and layouts of the Unit #1 modification plan and the Unit #1 landscape modification plan.

The substance of this request and modification is to rearrange and have Unit #1 face Rivercrest Way rather than Ferry Street.

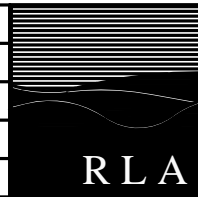
Very truly yours,



Raymond Authier  
Manager



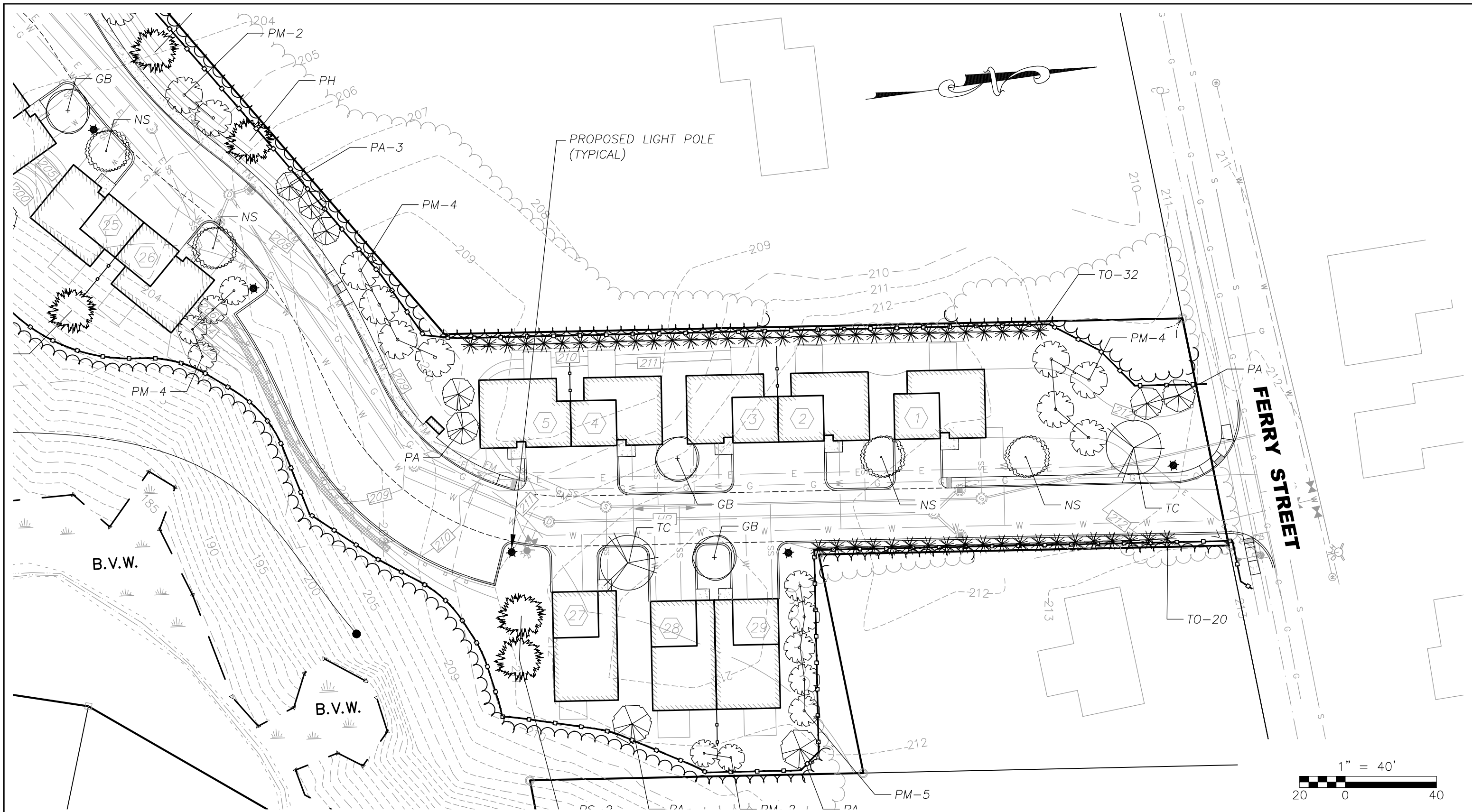
<b>REVISION:</b>	<b>DATE:</b>
A: Revised Unit 1 Location	09.13.2017
<b>SCALE:</b> 1" = 20'	<b>DATE:</b> 09.12.2017
<b>JOB NO.:</b> 131119	



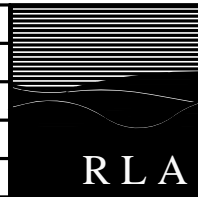
**R LEVESQUE ASSOCIATES, INC**  
 A Land Planning Services Company  
 40 School Street · P.O. Box 640 · Westfield, MA 01086  
 ph: 413.568.0985 fax: 413.568.0986 rland.com

**Unit 1 Layout Modification Plan**  
 Rivercrest Condominiums - Ferry St · South Hadley, MA  
 FOR  
 Ferry Street Nominee Trust

**DRAWING#**  
**S-1**



<b>REVISION:</b>	<b>DATE:</b>
A: Revised Unit 1 Footprint	09.12.17
B: Revised Unit 1 Location & Planting	09.13.17
<b>SCALE:</b> 1" = 40'	<b>DATE:</b> 10/6/14
<b>JOB NO.:</b> 131119	



**R LEVESQUE ASSOCIATES, INC**  
 A Land Planning Services Company  
 40 School Street · P.O. Box 640 · Westfield, MA 01086  
 ph: 413.568.0985 fax: 413.568.0986 rlalnd.com

**Unit 1 Landscape Modification**  
 Rivercrest Condominiums - Ferry St · South Hadley, MA  
 FOR  
 Ferry Street Nominee Trust

**DRAWING#**  
**L-1**