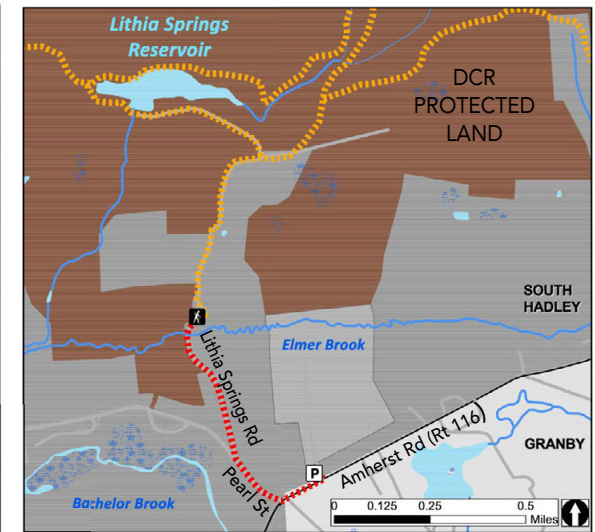
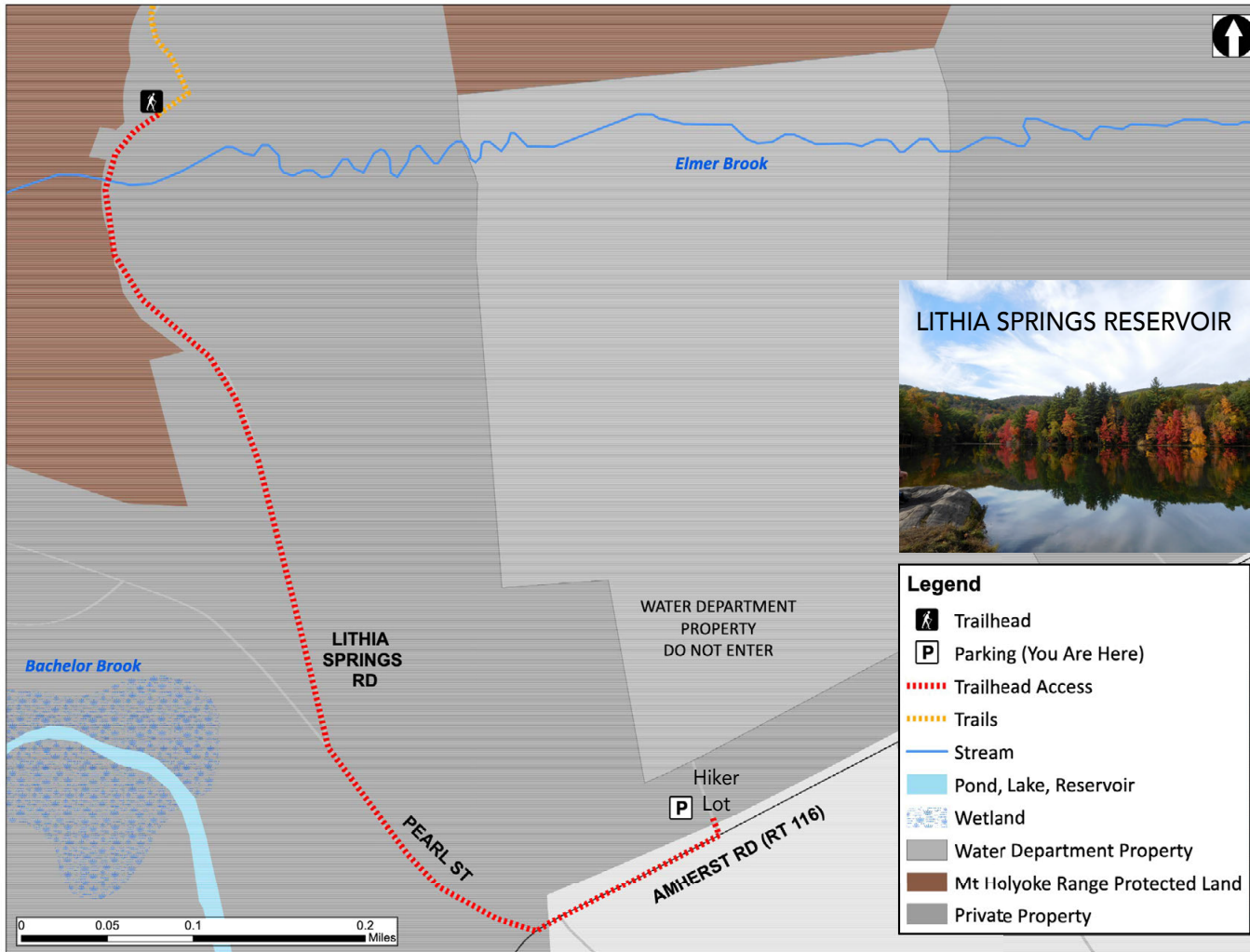


DCR Lithia Springs Trail | Access from South Hadley Hiker Parking Lot (Amherst Rd/Rt 116) at Elmer Brook



Lithia Springs Reservoir is located in the Joseph Allen Skinner State Park in the Holyoke Range, which is managed by the Massachusetts Dept. of Conservation and Recreation (DCR).

Lithia Springs became part of South Hadley's District 2 water system in 1931. In 1941, a new reservoir was built, followed by dam work in 1950. Though plans were approved in 1970 to enlarge Lithia Springs, its low capacity and surface water filtering needs were limiting. By 1996, it was out of service and in 2000, the pumping station closed.

Property owned by South Hadley District 2 Water Department | 413.532.9210 | www.shdistrict2.org/water-department | In case of emergency dial 911

Access to DCR's Skinner/Mt. Holyoke Range State Parks and Lithia Springs Reservoir from this location is only allowed by walking south on Amherst Road (Rt 116) to Pearl Street, then onto Lithia Springs Road. Pass the gate at the end of the road, then follow the dirt road to the hiking trails.

Swimming is not permitted at Lithia Springs. Please obey all signs. Do not cross private property.

Additional parking and trailheads provide access to the Holyoke Range at the Notch Visitor Center (1500 West St, Amherst) and off Rt 47 (1-39 Old Mountain Rd, Hadley). See Holyoke Range trail maps.



www.southhadley.org/bikewalk



For Mount Holyoke Range State Parks information and trail maps, scan the QR code at left or visit: www.mass.gov/locations/mount-holyoke-range-state-park