

MAP REFERENCE

1. EXISTING CONDITIONS DEPICTED ON THIS PLAN ARE BASED ON
 - 1.1. A PLAN ENTITLED: **PLAN OF LAND IN SOUTH HADLEY, MASSACHUSETTS, PREPARED FOR FUSS & O'NEILL, EXISTING CONDITIONS QUEENSVILLE DAM/BUTTERY BROOK, REVISED THROUGH: OCTOBER 14, 2022** PREPARED BY SHERMAN & FRYDRYK, 3 CONVERSE STREET, SUITE 203, PALMER, MASSACHUSETTS, JOB #21178, DWG #21178-EC.
 - 1.2. A GPS FIELD INVESTIGATION OF WETLAND FLAG SERIES C AND MEAN ANNUAL HIGH WATER/BANK/OHW PERFORMED BY FUSS & O'NEILL ON OCTOBER 18 and 21, 2021.
 - 1.3. 2019 USGS LEAF-OFF AERIAL IMAGERY USED TO APPROXIMATE BANKS WHERE ACCESS WAS NOT FEASIBLE.
 - 1.4. 2015 MAINE AND MASSACHUSETTS QLT1 AND QLT2 USGS LIDAR DATA.
2. TOPOGRAPHIC ELEVATIONS ARE BASED ON NAVD83 DATUM. HORIZONTAL DATUM IS NAD83.
3. WETLANDS WERE DELINEATED BY FUSS & O'NEILL SOIL SCIENTIST MICHAEL SOARES ON OCTOBER 18 and 21, 2021.

GENERAL NOTES

1. SYMBOLS AND LEGENDS OF PROJECT FEATURES ARE GRAPHIC REPRESENTATIONS AND ARE NOT NECESSARILY SHOWN ON THE DRAWINGS TO SCALE OR TO THEIR ACTUAL DIMENSION OR LOCATION. COORDINATE DETAIL SHEET DIMENSIONS, MANUFACTURERS' LITERATURE, SHOP DRAWINGS AND FIELD MEASUREMENTS OF SUPPLIED PRODUCTS FOR LAYOUT OF THE PROJECT FEATURES.
2. DO NOT RELY SOLELY ON ELECTRONIC VERSIONS OF DRAWINGS, SPECIFICATIONS, AND DATA FILES THAT ARE PROVIDED BY THE ENGINEER. FIELD VERIFY LOCATION OF PROJECT FEATURES.
3. PERFORM NECESSARY CONSTRUCTION NOTIFICATIONS, APPLY FOR AND OBTAIN NECESSARY PERMITS, PAY FEES, AND POST BONDS ASSOCIATED WITH THE WORK AS REQUIRED BY THE CONTRACT DOCUMENTS.
4. LOCATION OF UTILITIES SHOWN HEREON ARE THE RESULT OF SURFACE EVIDENCE AS LOCATED BY FIELD SURVEY, PLANS OF RECORD, INFORMATION FURNISHED BY THE RESPECTIVE UTILITY COMPANIES, AND OTHER AVAILABLE SOURCES. THIS PLAN DOES NOT NECESSARILY DEPICT THE EXACT LOCATION OF ALL UTILITIES WHICH MAY EXIST AT THIS TIME WITHIN THE PREMISES SURVEYED. LOCATIONS SHOULD BE VERIFIED BY THE RESPECTIVE UTILITY COMPANY BEFORE BEING RELIED UPON. ALL FIELD CHANGES MUST BE APPROVED BY THE

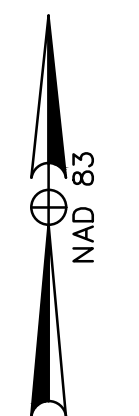
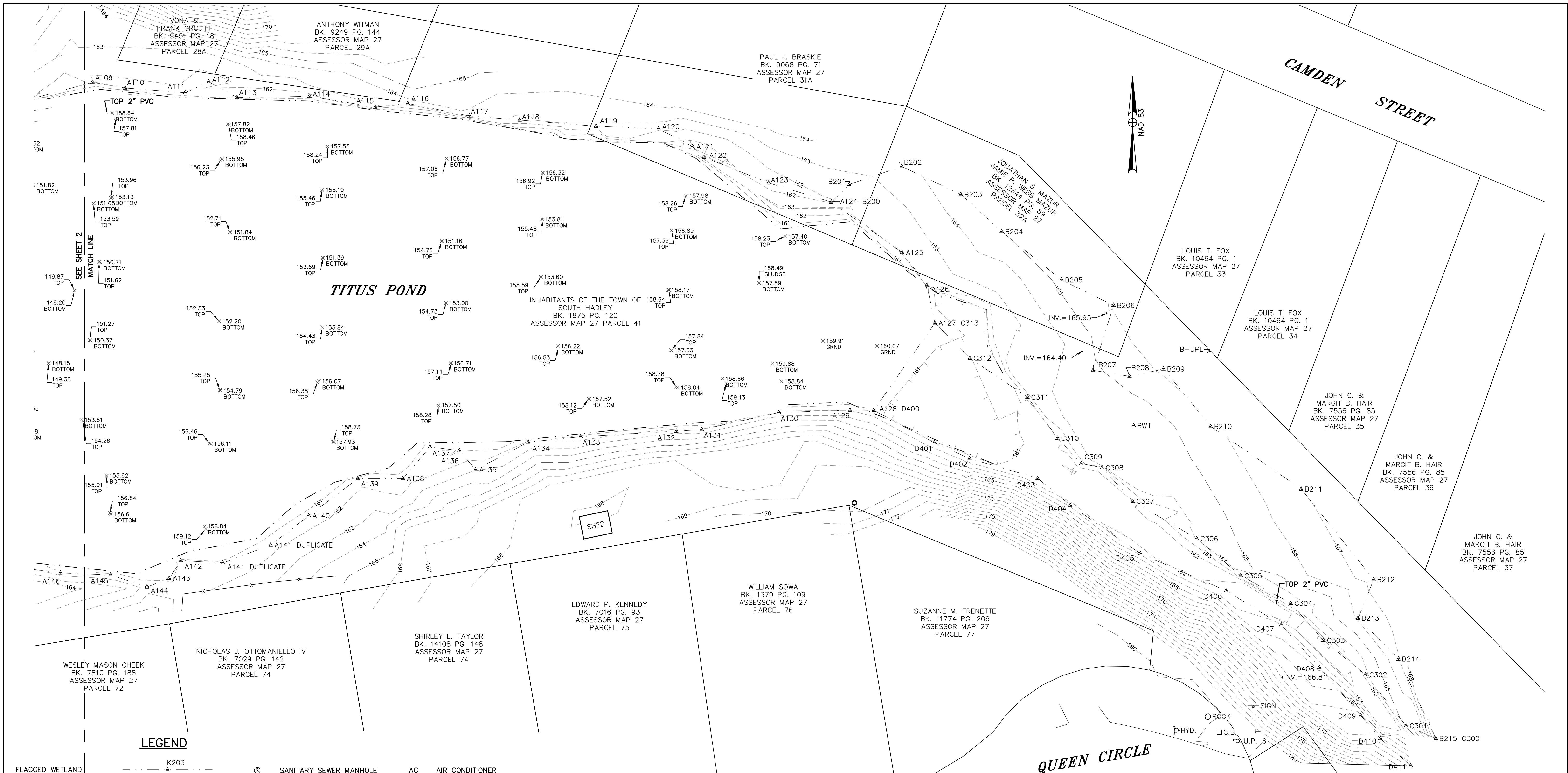
ENGINEER.

5. LOCATION AND INVERTS OF EXISTING UTILITIES SHALL BE VERIFIED WITH THE ENGINEER PRIOR TO CONSTRUCTION. ALL FIELD CHANGES MUST BE APPROVED BY THE ENGINEER.
6. FUSS & O'NEILL MAKES NO GUARANTEES THAT THE UNDERGROUND UTILITIES SHOWN COMPRISE ALL SUCH UTILITIES IN THE AREA. FUSS & O'NEILL FURTHER DOES NOT WARRANT THAT THE UNDERGROUND UTILITIES SHOWN ARE IN THE EXACT LOCATION INDICATED. FUSS & O'NEILL HAS NOT PHYSICALLY LOCATED THE UNDERGROUND UTILITIES. BEFORE CONSTRUCTION, THE CONTRACTOR SHALL CALL DIG SAFE SYSTEMS FOR CLEARANCE.
7. REFER TO CONTRACT DOCUMENTS FOR GEOTECHNICAL REQUIREMENTS.

LEGEND

WETLAND DELINEATION FLAG		SANITARY SEWER MANHOLE	
BORDERING VEGETATED WETLANDS		STORM DRAIN MANHOLE	
CONTOUR (MAJOR)		CATCH BASIN	
CONTOUR (MINOR)		TELECOMM MANHOLE	
50' CONSERVATION ZONE (LOCAL)		UTILITY POLE W/GUY	
100' BUFFER ZONE		UTILITY POLE	
BANK/MEAN ANNUAL HIGH WATER (MAHW)		LIGHTPOST	
PROPERTY LINE		GAS GATE	
SANITARY SEWER		GAS TEST BOX	
STORM DRAIN		WATER GATE	
WATER MAIN		HYDRANT	
UNDERGROUND ELECTRIC		SIGN	
UNDERGROUND TELEPHONE		MAILBOX	
GAS LINE		BUSH	
OVERHEAD ELECTRIC		CONIFEROUS TREE	
GUARDRAIL		DECIDUOUS TREE	
EDGE OF PAVEMENT			
BITUMINOUS CURB			

<p>TOWN OF SOUTH HADLEY</p> <p>EXISTING CONDITIONS PLAN</p> <p>MOUNTAIN AVENUE CULVERT REPLACEMENT</p> <p>SOUTH HADLEY, MASSACHUSETTS</p>	<p>FUSS & O'NEILL</p> <p>150 MAIN STREET, SUITE 400 413-452-0445 www.fussandoneill.com</p>												
<p>SCALE: HORIZ.: 1"=30' VERT.: N/A</p> <p>DATUM: HORIZ.: NAD83 VERT.: NAVD83</p> <p>GRAPHIC SCALE</p>	<table border="1" style="width: 100%; border-collapse: collapse;"> <thead> <tr> <th>No.</th> <th>DATE</th> <th>DESCRIPTION</th> <th>DESIGNER/REVIEWER</th> </tr> </thead> <tbody> <tr> <td> </td> <td> </td> <td> </td> <td> </td> </tr> <tr> <td> </td> <td> </td> <td> </td> <td> </td> </tr> </tbody> </table>	No.	DATE	DESCRIPTION	DESIGNER/REVIEWER								
No.	DATE	DESCRIPTION	DESIGNER/REVIEWER										
<p>PROJ. No.: 20170390.V50 DATE: 01/11/2023</p>													
<p>EX-102</p>													

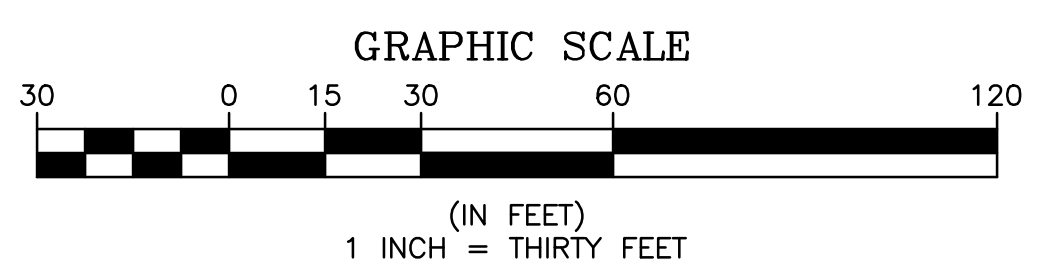


LEGEND

FLAGGED WETLAND (ESTABLISHED BY CLIENT)		K203	⊙ SANITARY SEWER MANHOLE	AC AIR CONDITIONER
CONTOUR (INDEX)		100	⊙ STORM DRAIN MANHOLE	GM GAS METER
CONTOUR (INTERMEDIATE)		103	⊙ TELECOMM MANHOLE	RCP REINFORCED CONCRETE PIPE
EDGE OF VEGETATION			⊙ UTILITY POLE W/GUY	CMP CORRUGATED METAL PIPE
CHAIN LINK FENCE			⊙ UTILITY POLE	PVC POLYVINYL CHLORIDE PIPE
EDGE OF PAVEMENT			⊙ LIGHTPOST	HDPE HIGH DENSITY POLYETHYLENE PIPE
PROPERTY LINE			⊙ G.G. GAS GATE	BIT. BITUMINOUS CONC.
ABUTTER LINE			⊙ GAS TEST BOX	
SANITARY SEWER		S	⊙ W.G. WATER GATE	
STORM DRAIN		D	⊙ HYDRANT	
WATER MAIN		W	⊙ SIGN	
UNDERGROUND ELECTRIC		E	⊙ MAILBOX	
UNDERGROUND TELEPHONE		T	⊙ XC1 CROSS SECTION FLAG (ESTABLISHED BY CLIENT)	
UNDERGROUND TELEVISION		TV	⊙ BUSH	
GAS LINE		G	⊙ CONIFEROUS TREE	
OVERHEAD ELECTRIC		OE	⊙ DECIDUOUS TREE	

158.73 TOP = TOP OF SEDIMENT
 X157.93 BOTTOM = BOTTOM OF SEDIMENT (LOCATED AT REFUSAL)

- NOTES:**
1. THIS PLAN IS BASED ON A FIELD SURVEY BY THIS OFFICE DATED 11/03/2012 THROUGH 01/24/2022. BATHYMETRY IN TITUS POND WAS COLLECTED IN SEPTEMBER OF 2022. AT TIME OF SAID BATHYMETRY, NEWTON STREET WAS UNDER CONSTRUCTION.
 2. HORIZONTAL DATUM IS NAD83. VERTICAL DATUM IS NAVD88. BOTH DATUMS WERE ESTABLISHED AT THIS SITE BY GPS METHODS. TEMPORARY VERTICAL BENCHMARKS WERE SET AND ARE AS SHOWN ON THIS PLAN.
 3. UTILITIES ARE SHOWN HEREON FROM FIELD LOCATIONS OF SURFACE VISIBLE STRUCTURES AND AVAILABLE RECORD INFORMATION. OTHER UNDERGROUND UTILITIES MAY EXIST. IT SHALL BE THE RESPONSIBILITY OF THE CONTRACTOR TO VERIFY THE LOCATION, SIZE & ELEVATION OF ALL UTILITIES WITHIN THE AREA OF PROPOSED WORK AND TO CONTACT "DIG-SAFE" AT 811 AT LEAST 72 HOURS PRIOR TO ANY EXCAVATION, DEMOLITION OR CONSTRUCTION.
 4. PROPERTY LINES SHOWN ARE BASED ON MASS GIS DATA.
 5. ABUTTER INFORMATION SHOWN IS BASED ON SOUTH HADLEY'S ASSESSOR'S RECORDS AS SHOWN ON THE TOWNS WEB SITE.



NO.	DATE	BY	REVISIONS
1	10/21/22	KJM	ADDITIONAL BATHYMETRY & TOPOGRAPHY AROUND TITUS POND

SHERMAN & FRYDRYK
Land Surveying, Engineering & Scientists
 A DIVISION OF HANCOCK SURVEY ASSOCIATES, INC.
 3 Converse Street, Suite 203
 Palmer, MA 01069

FIELD WORK: KRP/ESJ
 COMPS: KJM
 DRAFTING: KJM
 CHECKED: TRF
 APPROVED: GGG

SCALE:
 HORZ: 1"=20'
 VERT: N/A
 DATE: 01/24/2022

PARTIAL EXISTING CONDITIONS
QUEENSVILLE DAM/BATTERY BROOK

PLAN OF LAND IN SOUTH HADLEY, MA PREPARED FOR FUSS & O'NEILL

PROJECT NUMBER 21162
SHEET NUMBER 1 OF 4

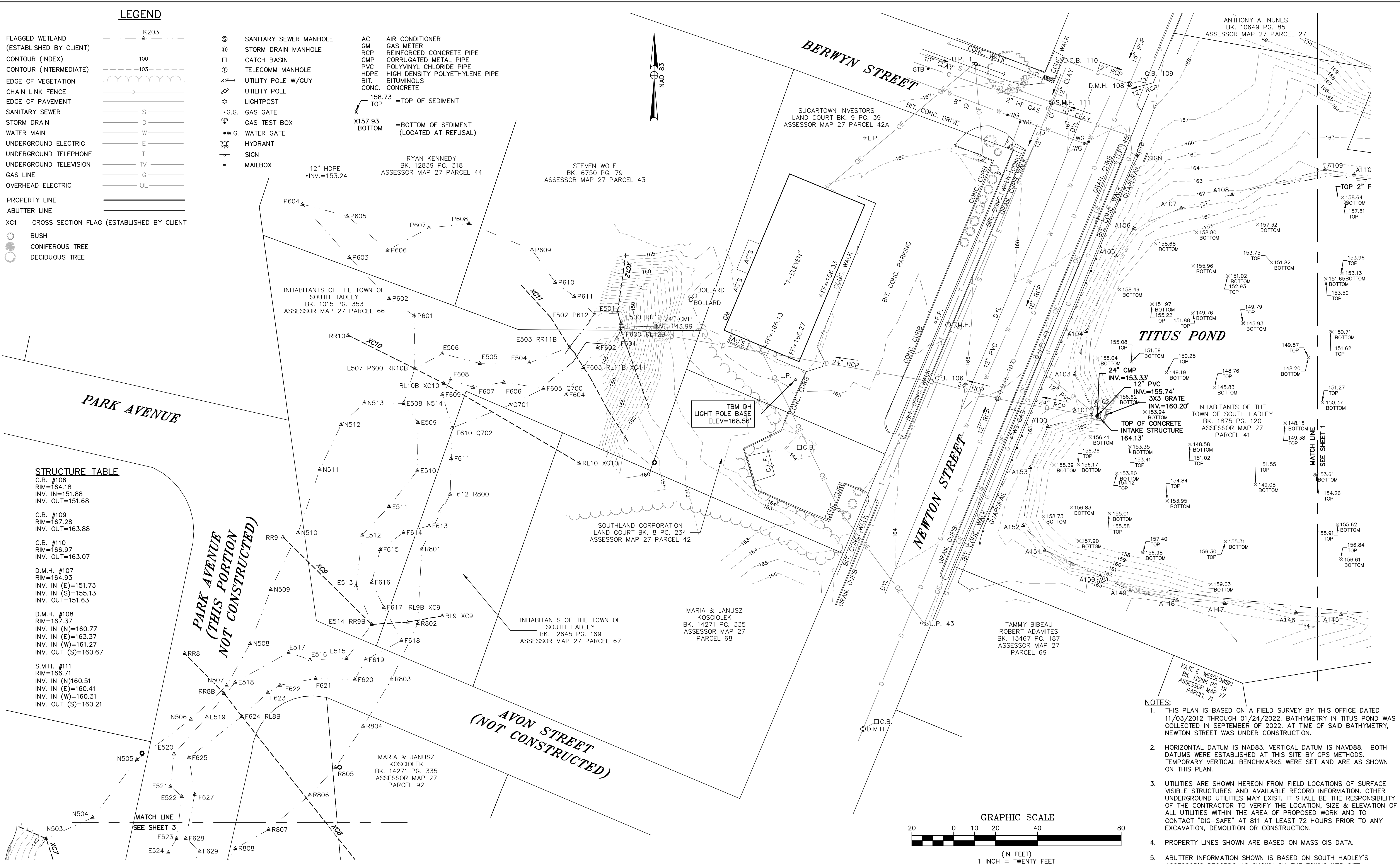
LEGEND

- FLAGGED WETLAND (ESTABLISHED BY CLIENT)
- CONTOUR (INDEX)
- CONTOUR (INTERMEDIATE)
- EDGE OF VEGETATION
- CHAIN LINK FENCE
- EDGE OF PAVEMENT
- SANITARY SEWER
- STORM DRAIN
- WATER MAIN
- UNDERGROUND ELECTRIC
- UNDERGROUND TELEPHONE
- UNDERGROUND TELEVISION
- GAS LINE
- OVERHEAD ELECTRIC
- PROPERTY LINE
- ABUTTER LINE
- XC1 CROSS SECTION FLAG (ESTABLISHED BY CLIENT)
- BUSH
- CONIFEROUS TREE
- DECIDUOUS TREE

- SANITARY SEWER MANHOLE
- STORM DRAIN MANHOLE
- CATCH BASIN
- TELECOMM MANHOLE
- UTILITY POLE W/GUY
- UTILITY POLE
- LIGHTPOST
- GAS GATE
- GAS TEST BOX
- WATER GATE
- HYDRANT
- SIGN
- MAILBOX
- AIR CONDITIONER
- GAS METER
- REINFORCED CONCRETE PIPE
- CORRUGATED METAL PIPE
- POLYVINYL CHLORIDE PIPE
- HIGH DENSITY POLYETHYLENE PIPE
- BITUMINOUS CONCRETE
- TOP OF SEDIMENT
- BOTTOM OF SEDIMENT (LOCATED AT REFUSAL)

STRUCTURE TABLE

C.B. #108	RIM=164.18	INV. IN=151.88	INV. OUT=151.68
C.B. #109	RIM=167.28	INV. OUT=163.88	
C.B. #110	RIM=166.97	INV. OUT=163.07	
D.M.H. #107	RIM=164.93	INV. IN (E)=151.73	INV. IN (S)=155.13
		INV. OUT=151.63	
D.M.H. #108	RIM=167.37	INV. IN (N)=160.77	INV. IN (E)=163.37
		INV. IN (W)=161.27	INV. OUT (S)=160.67
S.M.H. #111	RIM=166.71	INV. IN (N)=160.51	INV. IN (E)=160.41
		INV. IN (W)=160.31	INV. OUT (S)=160.21



- NOTES:**
- THIS PLAN IS BASED ON A FIELD SURVEY BY THIS OFFICE DATED 11/03/2012 THROUGH 01/24/2022. BATHYMETRY IN TITUS POND WAS COLLECTED IN SEPTEMBER OF 2022. AT TIME OF SAID BATHYMETRY, NEWTON STREET WAS UNDER CONSTRUCTION.
 - HORIZONTAL DATUM IS NAD83. VERTICAL DATUM IS NAVD88. BOTH DATUMS WERE ESTABLISHED AT THIS SITE BY GPS METHODS. TEMPORARY VERTICAL BENCHMARKS WERE SET AND ARE AS SHOWN ON THIS PLAN.
 - UTILITIES ARE SHOWN HEREON FROM FIELD LOCATIONS OF SURFACE VISIBLE STRUCTURES AND AVAILABLE RECORD INFORMATION. OTHER UNDERGROUND UTILITIES MAY EXIST. IT SHALL BE THE RESPONSIBILITY OF THE CONTRACTOR TO VERIFY THE LOCATION, SIZE & ELEVATION OF ALL UTILITIES WITHIN THE AREA OF PROPOSED WORK AND TO CONTACT "DIG-SAFE" AT 811 AT LEAST 72 HOURS PRIOR TO ANY EXCAVATION, DEMOLITION OR CONSTRUCTION.
 - PROPERTY LINES SHOWN ARE BASED ON MASS GIS DATA.
 - ABUTTER INFORMATION SHOWN IS BASED ON SOUTH HADLEY'S ASSESSOR'S RECORDS AS SHOWN ON THE TOWNS WEB SITE.

NO.	DATE	BY	REVISIONS
1	10/21/22	KJM	ADDITIONAL BATHYMETRY & TOPOGRAPHY AROUND TITUS POND

SHERMAN & FRYDRYK
Land Surveying, Engineering & Scientists
 A DIVISION OF HANCOCK SURVEY ASSOCIATES, INC.
 3 Converse Street, Suite 203
 Palmer, MA 01069

FIELD WORK: KRP/ESJ
 COMPS: KJM
 DRAFTING: KJM
 CHECKED: TRF
 APPROVED: GGG

SCALE:
 HORZ: 1"=20'
 VERT: N/A
 DATE: 01/24/2022

PARTIAL EXISTING CONDITIONS
QUEENSVILLE DAM/BUTTERY BROOK

PLAN OF LAND IN SOUTH HADLEY, MA
 PREPARED FOR
FUSS & O'NEILL

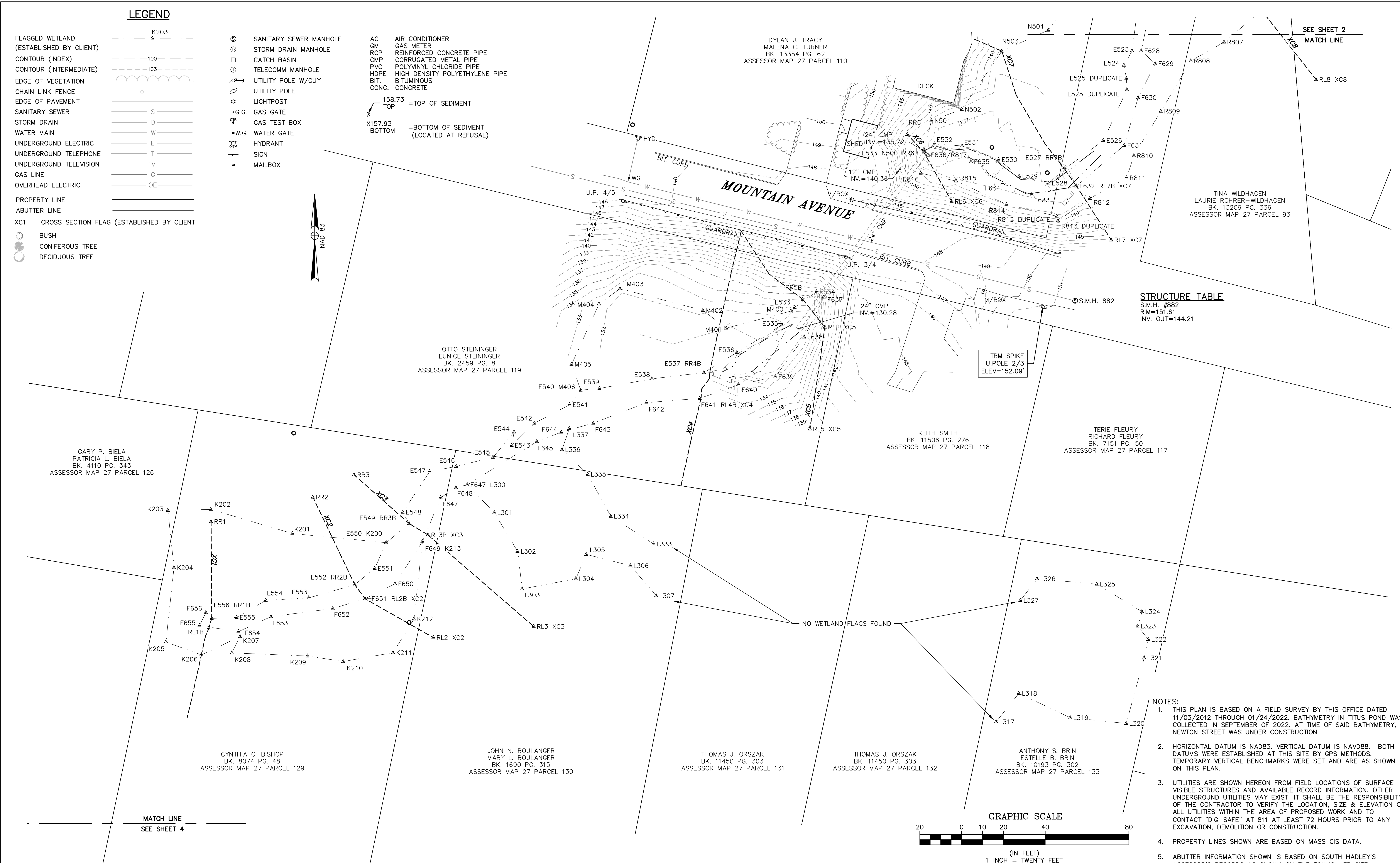
PROJECT NUMBER
21162
SHEET NUMBER
2 OF 4

LEGEND

- FLAGGED WETLAND (ESTABLISHED BY CLIENT)
- CONTOUR (INDEX)
- CONTOUR (INTERMEDIATE)
- EDGE OF VEGETATION
- CHAIN LINK FENCE
- EDGE OF PAVEMENT
- SANITARY SEWER
- STORM DRAIN
- WATER MAIN
- UNDERGROUND ELECTRIC
- UNDERGROUND TELEPHONE
- UNDERGROUND TELEVISION
- GAS LINE
- OVERHEAD ELECTRIC
- PROPERTY LINE
- ABUTTER LINE
- XC1 CROSS SECTION FLAG (ESTABLISHED BY CLIENT)
- BUSH
- CONIFEROUS TREE
- DECIDUOUS TREE

- ⊙ SANITARY SEWER MANHOLE
- ⊕ STORM DRAIN MANHOLE
- ⊞ CATCH BASIN
- ⊕ TELECOMM MANHOLE
- ⊕ UTILITY POLE W/GUY
- ⊕ UTILITY POLE
- ☆ LIGHTPOST
- +G.G. GAS GATE
- ⊕ GAS TEST BOX
- W.G. WATER GATE
- ⊕ HYDRANT
- ⊕ SIGN
- ⊕ MAILBOX

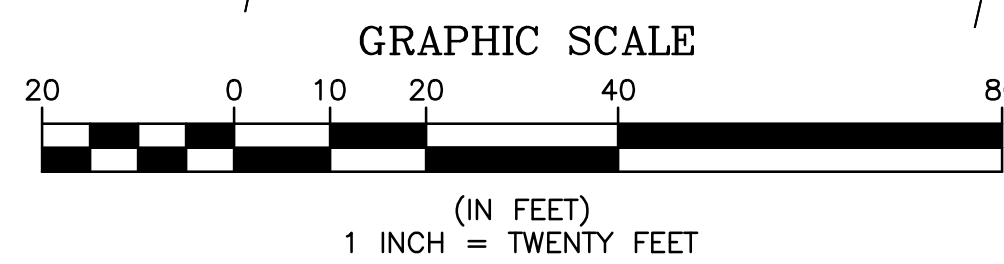
- AC AIR CONDITIONER
- GM GAS METER
- RCP REINFORCED CONCRETE PIPE
- CMP CORRUGATED METAL PIPE
- PVC POLYVINYL CHLORIDE PIPE
- HDPE HIGH DENSITY POLYETHYLENE PIPE
- BIT. BITUMINOUS
- CONC. CONCRETE
- X158.73 TOP = TOP OF SEDIMENT
- X157.93 BOTTOM = BOTTOM OF SEDIMENT (LOCATED AT REFUSAL)



STRUCTURE TABLE

S.M.H. #882
RIM=151.61
INV. OUT=144.21

TBM SPIKE
U. POLE 2/3
ELEV=152.09'



- NOTES:**
1. THIS PLAN IS BASED ON A FIELD SURVEY BY THIS OFFICE DATED 11/03/2012 THROUGH 01/24/2022. BATHYMETRY IN TITUS POND WAS COLLECTED IN SEPTEMBER OF 2022. AT TIME OF SAID BATHYMETRY, NEWTON STREET WAS UNDER CONSTRUCTION.
 2. HORIZONTAL DATUM IS NAD83. VERTICAL DATUM IS NAVD88. BOTH DATUMS WERE ESTABLISHED AT THIS SITE BY GPS METHODS. TEMPORARY VERTICAL BENCHMARKS WERE SET AND ARE AS SHOWN ON THIS PLAN.
 3. UTILITIES ARE SHOWN HEREON FROM FIELD LOCATIONS OF SURFACE VISIBLE STRUCTURES AND AVAILABLE RECORD INFORMATION. OTHER UNDERGROUND UTILITIES MAY EXIST. IT SHALL BE THE RESPONSIBILITY OF THE CONTRACTOR TO VERIFY THE LOCATION, SIZE & ELEVATION OF ALL UTILITIES WITHIN THE AREA OF PROPOSED WORK AND TO CONTACT "DIG-SAFE" AT 811 AT LEAST 72 HOURS PRIOR TO ANY EXCAVATION, DEMOLITION OR CONSTRUCTION.
 4. PROPERTY LINES SHOWN ARE BASED ON MASS GIS DATA.
 5. ABUTTER INFORMATION SHOWN IS BASED ON SOUTH HADLEY'S ASSESSOR'S RECORDS AS SHOWN ON THE TOWNS WEB SITE.

NO.	DATE	BY	REVISIONS
1	10/21/22	KJM	ADDITIONAL BATHYMETRY & TOPOGRAPHY AROUND TITUS POND

SHERMAN & FRYDRYK
Land Surveying, Engineering & Scientists
A DIVISION OF HANCOCK SURVEY ASSOCIATES, INC.
3 Converse Street, Suite 203
Palmer, MA 01069

FIELD WORK: KRP/ESJ
COMPS: KJM
DRAFTING: KJM
CHECKED: TRF
APPROVED: GGG

SCALE:
HORZ: 1"=20'
VERT: N/A
DATE: 01/24/2022

PARTIAL EXISTING CONDITIONS

QUEENSVILLE DAM/BUTTERY BROOK

PLAN OF LAND IN
SOUTH HADLEY, MA
PREPARED FOR
FUSS & O'NEILL

PROJECT NUMBER 21162
SHEET NUMBER 3 OF 4

LEGEND

- FLAGGED WETLAND (ESTABLISHED BY CLIENT)
- CONTOUR (INDEX)
- CONTOUR (INTERMEDIATE)
- EDGE OF VEGETATION
- CHAIN LINK FENCE
- EDGE OF PAVEMENT
- SANITARY SEWER
- STORM DRAIN
- WATER MAIN
- UNDERGROUND ELECTRIC
- UNDERGROUND TELEPHONE
- UNDERGROUND TELEVISION
- GAS LINE
- OVERHEAD ELECTRIC
- PROPERTY LINE
- ABUTTER LINE
- XC1 CROSS SECTION FLAG (ESTABLISHED BY CLIENT)
- BUSH
- CONIFEROUS TREE
- DECIDUOUS TREE

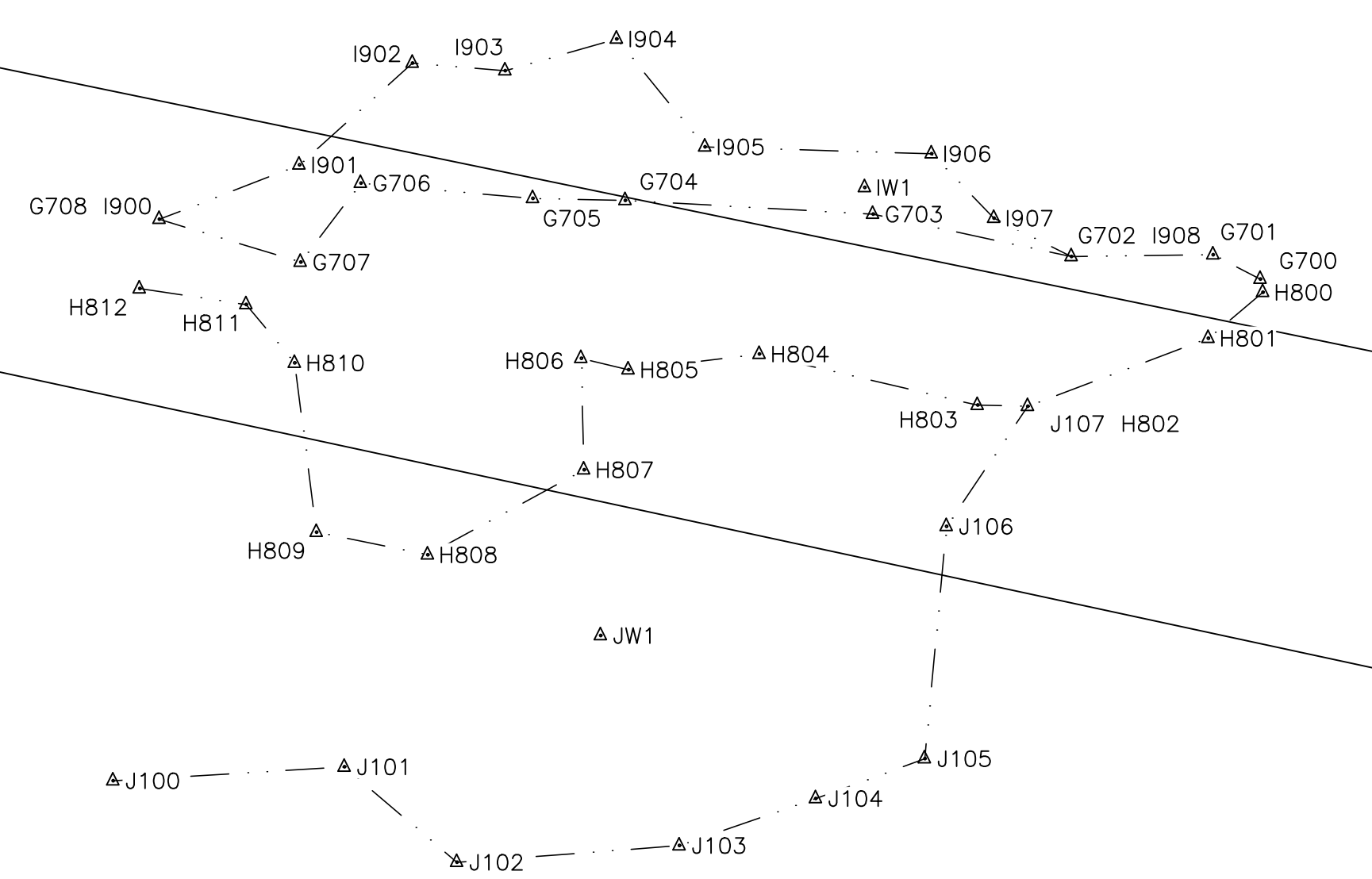
- ⊙ SANITARY SEWER MANHOLE
- ⊕ STORM DRAIN MANHOLE
- CATCH BASIN
- ⊕ TELECOMM MANHOLE
- ↗ UTILITY POLE W/GUY
- ↖ UTILITY POLE
- ☆ LIGHTPOST
- G.G. GAS GATE
- ⊕ GAS TEST BOX
- W.G. WATER GATE
- ⊕ HYDRANT
- ⊕ SIGN
- ⊕ MAILBOX

- AC AIR CONDITIONER
- GM GAS METER
- RCP REINFORCED CONCRETE PIPE
- CMP CORRUGATED METAL PIPE
- PVC POLYVINYL CHLORIDE PIPE
- HDPE HIGH DENSITY POLYETHYLENE PIPE
- BIT. BITUMINOUS
- CONC. CONCRETE
- X158.73 TOP =TOP OF SEDIMENT
- X157.93 BOTTOM =BOTTOM OF SEDIMENT (LOCATED AT REFUSAL)



SEE SHEET 3
MATCH LINE

DAVID WOJNAROWSKI
SHERYL WOJNAROWSKI
BK. 9466 PG. 75
ASSESSOR MAP 25 PARCEL 55



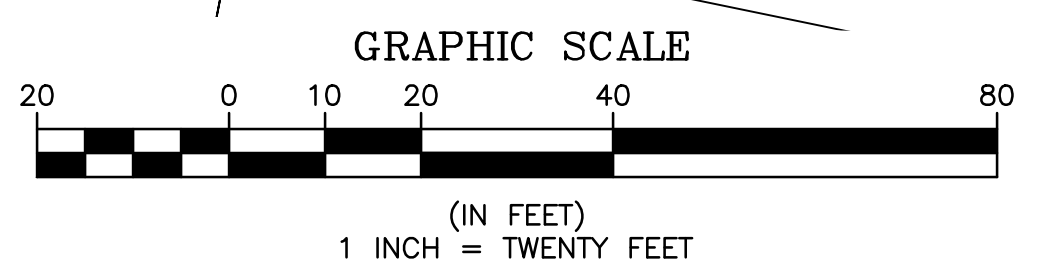
HAIG AVENUE
(NOT CONSTRUCTED)

VIVIANNI STREET
(NOT CONSTRUCTED)

HAIG AVENUE

TBM SPINDLE
HYDRANT
ELEV=130.04'

DAVID B. WILLIAMS
AMY M. WILLIAMS
BK. 10710 PG. 339
ASSESSOR MAP 25 PARCEL 64



- NOTES:
- THIS PLAN IS BASED ON A FIELD SURVEY BY THIS OFFICE DATED 11/03/2012 THROUGH 01/24/2022. BATHYMETRY IN TITUS POND WAS COLLECTED IN SEPTEMBER OF 2022. AT TIME OF SAID BATHYMETRY, NEWTON STREET WAS UNDER CONSTRUCTION.
 - HORIZONTAL DATUM IS NAD83. VERTICAL DATUM IS NAVD88. BOTH DATUMS WERE ESTABLISHED AT THIS SITE BY GPS METHODS. TEMPORARY VERTICAL BENCHMARKS WERE SET AND ARE AS SHOWN ON THIS PLAN.
 - UTILITIES ARE SHOWN HEREON FROM FIELD LOCATIONS OF SURFACE VISIBLE STRUCTURES AND AVAILABLE RECORD INFORMATION. OTHER UNDERGROUND UTILITIES MAY EXIST. IT SHALL BE THE RESPONSIBILITY OF THE CONTRACTOR TO VERIFY THE LOCATION, SIZE & ELEVATION OF ALL UTILITIES WITHIN THE AREA OF PROPOSED WORK AND TO CONTACT "DIG-SAFE" AT 811 AT LEAST 72 HOURS PRIOR TO ANY EXCAVATION, DEMOLITION OR CONSTRUCTION.
 - PROPERTY LINES SHOWN ARE BASED ON MASS GIS DATA.
 - ABUTTER INFORMATION SHOWN IS BASED ON SOUTH HADLEY'S ASSESSOR'S RECORDS AS SHOWN ON THE TOWNS WEB SITE.

NO.	DATE	BY	REVISIONS
1	10/21/22	KJM	ADDITIONAL BATHYMETRY & TOPOGRAPHY AROUND TITUS POND

SHERMAN & FRYDRYK
Land Surveying, Engineering & Scientists
A DIVISION OF HANCOCK SURVEY ASSOCIATES, INC.
3 Converse Street, Suite 203
Palmer, MA 01069

FIELD WORK: KRP/ESJ
COMPS: KJM
DRAFTING: KJM
CHECKED: TRF
APPROVED: GGG

SCALE:
HORZ: 1"=20'
VERT: N/A
DATE: 01/24/2022

PARTIAL EXISTING CONDITIONS
QUEENSVILLE DAM/BUTTERY BROOK

PLAN OF LAND IN
SOUTH HADLEY, MA
PREPARED FOR
FUSS & O'NEILL

PROJECT NUMBER 21162
SHEET NUMBER 4 OF 4